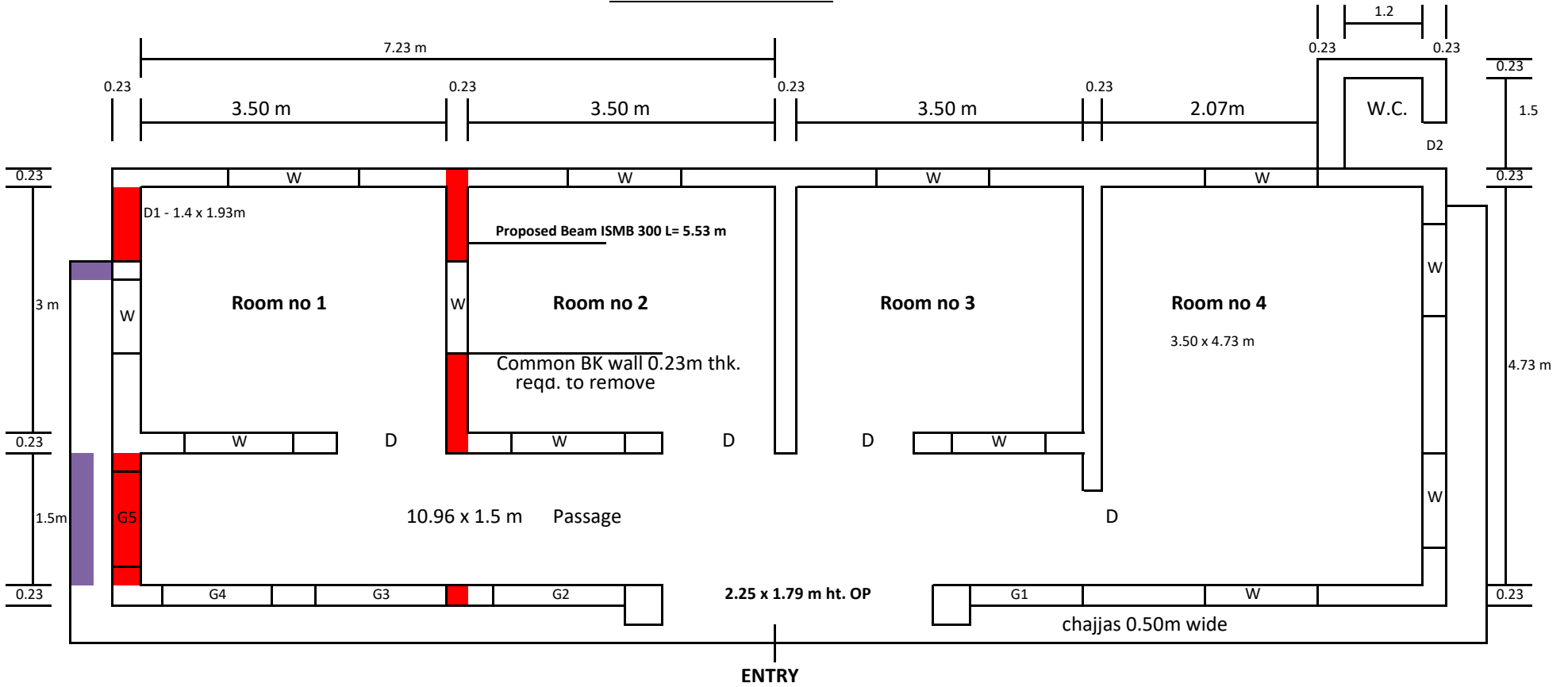


EXISTING BUILDING DRG.



Door -D2 = 1 no (0.75 x 1.93 m toilet)

Door -D = 4 nos (0.88 x 1.88 m Shutter)

Door - D = 4 nos (0.98 x 1.93 m Opning)

W = 06 nos (1.00 x 1.20m Alu. With wooden shutter)

W = 06 nos (1.00 x 1.20m wooden shutter)

Grill - G1 = 1.83 x 0.84m ht.

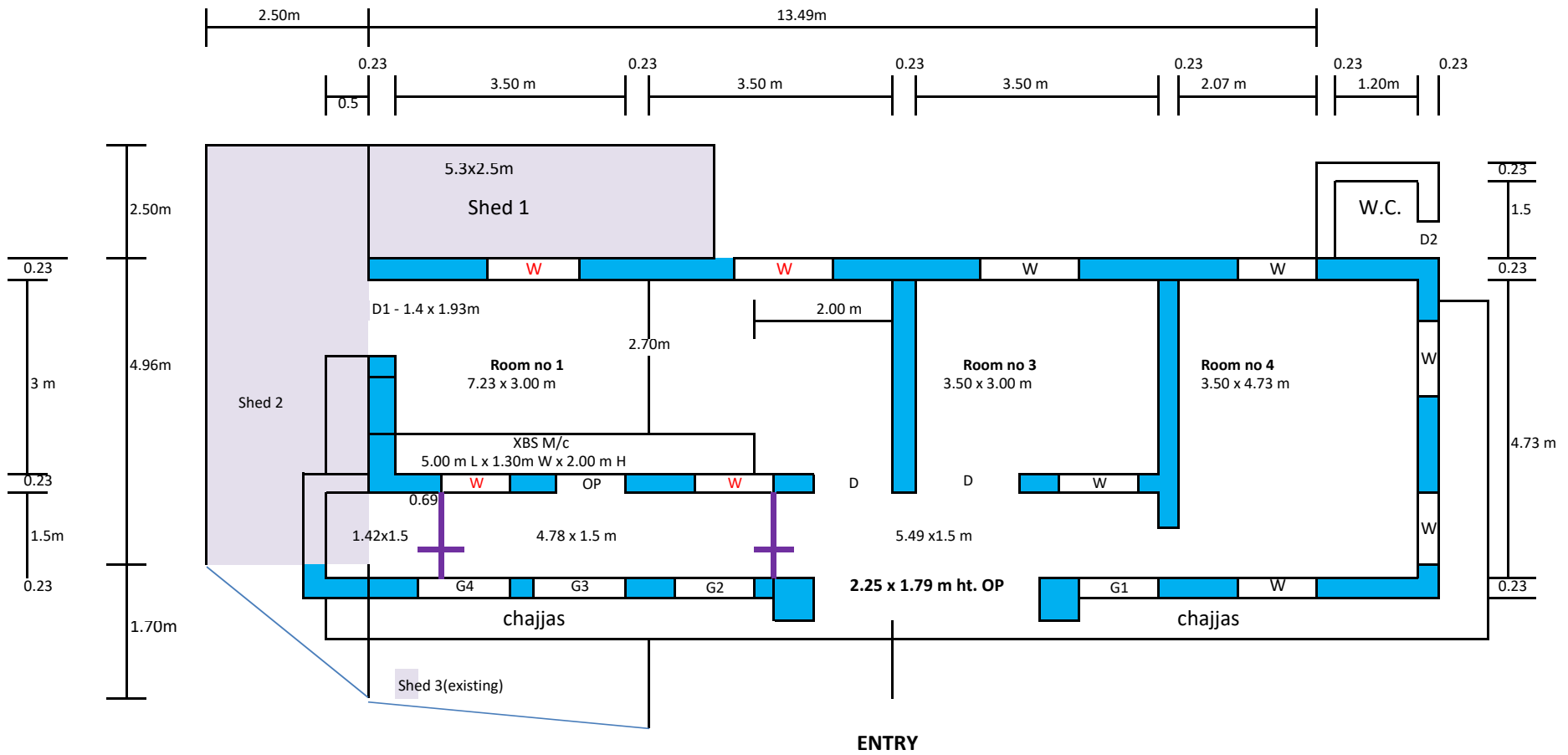
Grill - G2 = 2.03 x 0.84m ht.

Grill - G3 = 1.55 x 0.84m ht.

Grill - G4 = 1.55 x 0.84m ht.

Grill - G5 = 1.46 x 0.84m ht.

Colour shown dismantle RCC
Colour shown dismantle the BKM



Drg. For Shed - PLAN

PROPOSED PLAN FOR XBS Machine

