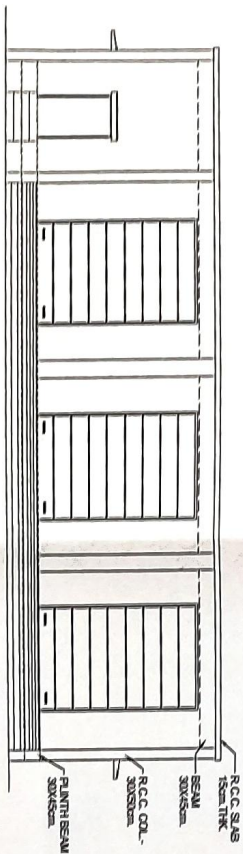
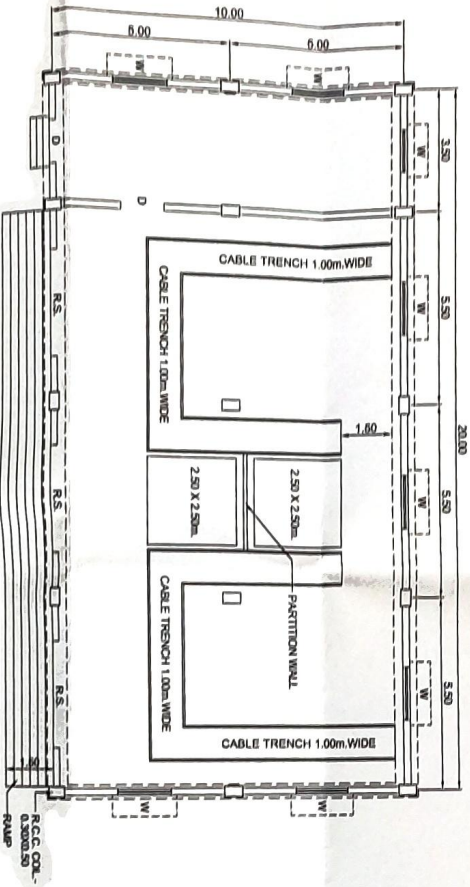


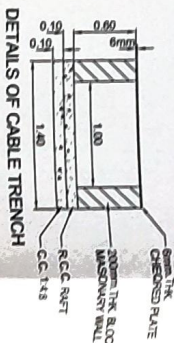
PLAN



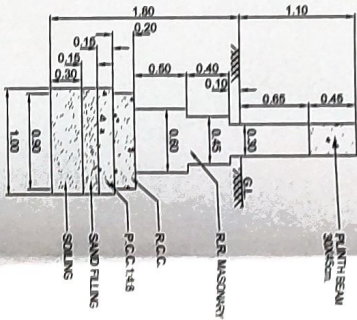
ELEVATION



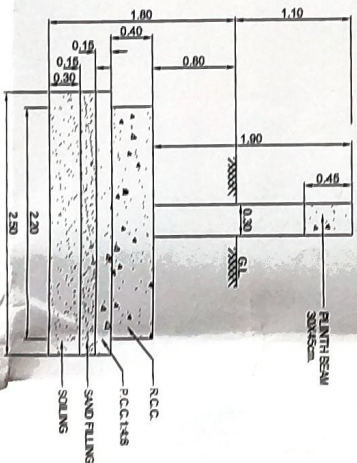
PLAN



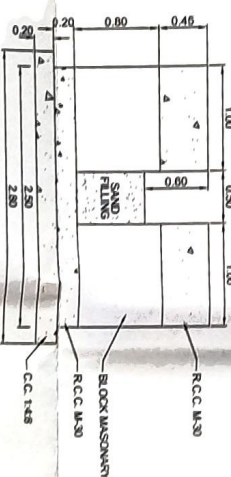
DETAILS OF CABLE TRENCH



DETAILS OF WALL FOOTING



DETAILS OF COLUMN FOOTING



DETAILS OF TRANSFORMER FOUNDATION

SHEET NO.:

LAC

BAGGING PLANT

ELECTRIC SUB STATION

G-7

FERTILIZER BULK STORAGE

AUCTION YARD

OFFICE OF TRAFFIC DEPT.

ISSUE SHEET

W.B. NO. 2

ELECTRIC SUB STATION

ISSUE SHEET

W.B. NO. 2

EMPTY CONTAINER

STORAGE GROUND

RAISED PLATFORM

T.S. - 5 OFFICE

TOILET BLOCK NO. 5

RAISED PLATFORM

BERTH NO. 7

BERTH NO. 6

BERTH NO. 5

KEY PLAN

NAME OF WORK:

CONSTRUCTION OF ELECTRIC SUB STATION NEAR OLD UNLOADER BUILDING TO REPLACE SUB STATION OF 6th. CARGO BERTH.

SCALE

DEENDAYAL PORT AUTHORITY

DWG. NO. DP/2023/

DATE

DRAWN BY: H.M. SHARMA

SR. ENGINEER ( )

S.D.O. ( )

XEN ( )