

दीनदयाल पोर्ट ट्रस्ट

DEENDAYAL PORT TRUST

Off-Shore Oil Terminal Department
Vadinar



EXPRESSION OF INTEREST (Budgetary Quotation)

For the work

“Renovation and Extension of Guest House at Port Colony, OOT, Vadinar”

PORT OFFICE

Executive Engineer [Civil],
Civil Division, AO Building,
Off-Shore Oil Terminal Department
Deendayal Port Trust, Vadinar – 361010
Gujarat State

Phone : +91 – 288 – 2573006
Fax : +91 – 288 – 2573031
Email : eecivil.oot@deendayalport.gov.in

DEENDAYAL PORT TRUST
OFFSHORE OIL TERMINAL, VADINAR
EXPRESSION OF INTEREST

(Budgetary Quotation)

No: OOT/C-NPS/WK/4023

Dated: 30/09/2021

Name of work: "Renovation and Extension of Guest House at Port Colony, OOT, Vadinar".

(This Notice is issued only to elicit Expression of Interest from the parties interested in the work and does not constitute any binding commitment from the Deendayal Port Trust to proceed with the work or invite any or all the parties in the subsequent bidding process. Public Tenders will be issued subsequently)

SECTION – I

Introduction

Deendayal Port Trust (DPT) invites expression of interest from contractor having experience in construction of building structures & renovation of building work like Guest House with conference room, VIP room, Dining hall, landscaping work of surrounding area, electrical work, furniture and interior work of building etc.

The expression of interest can be downloaded from Port website www.deendayalport.gov.in.

- a. The work is to be executed as described in the Bid document and in particular in the Technical Specifications, Special Conditions, Schedule of Quantities and Drawings and in general includes, but is not limited to supplying all including consumables and equipment necessary to execute the work as described in the Bid Document.

How to Apply

Interested Applicants are requested to submit EOI at below address by post/courier as per Forms below on or before 07/10/2020 at 1500 Hrs. or by email at below mentioned email id's.

Executive Engineer (Civil),
Liaison Office of Deendayal Port Trust,
Offshore Oil Terminal Department,
"Kama Kunu" No. 113-B, Mahavir Society-C,
Opp. Mahi Milk Dairy off Saru Section Road,
Jamnagar, Gujarat - 361008.
Tel: 0288-2573006
Email: eecivil.oot@deendayalport.gov.in / kptootcivilame@gmail.com

LETTER OF TRANSMITTAL
(to be typed in Firm's Letterhead)

To

Executive Engineer (Civil),
Administration office Building,
Offshore Oil Terminal Dept.,
Deendayal Port Trust,
Vadinar, DevBhoomiDvarka – 361010.

Sub: Renovation and Extension of Guest House at Port Colony, OOT, Vadinar, Deendayal Port Trust.

Sir,

Having examined the details given in EOI Notice and EOI document for the above project, I/we hereby submit our Expression of Interest and the relevant information.

1. I/We hereby certify that all the statements made and information supplied in the enclosed form and accompanying statements are true and correct.
2. I/We have furnished all information and details necessary for EOI and have no further pertinent information to supply.
3. I/We also authorize Deendayal Port Trust or their authorized representatives to approach individuals, employers and firms to verify our competence and general reputation.
4. I/We submit the following certificates in support of our suitability and capability for having successfully provided the services along with prescribed format.
5. We understand that DPT will be at liberty to finalize requirements and issue public tenders for the work.

Signature(s) of Applicant(s)

Enclosures:

Seal of applicant:

Date of submission:

Name of firms /Applicants

(Organizational Structure)

1	Name & Address of the applicant with Telephone No./Fax No	
2	a) Year of Establishment	
	b) Date & Year of commencement	
	c) Legal status of the applicant (attach copies of original document defining the legal status)	
3	a) A proprietary firm	
	b) A firm in partnership	
	c) A limited company or Corporation/ Joint venture /Consortia	
	d) State owned	
4	Any other information considered necessary but not included above	

Signature with Seal

Budgetary Quotation

Part - A Civil work

It.	Description	Qty.	Rate	Unit	Amount
1	Dismantling doors, windows and clerestory windows [steel or wood] shutter including chowkhats, architrave, holdfasts etc. complete and stacking within 50 metres lead				
1a	Of area 3 sq. metres and below	80.00		each	
1b	Of area beyond 3 sq. metres	18.00		each	
2	Demolishing stone rubble masonry manually / by mechanical means including stacking of serviceable material and disposal of unserviceable material within 50 metres lead as per direction of Engineer-in-charge				
2a	In Cement mortar	109.49		m3	
3	Demolishing brick work manually / by mechanical means including stacking of serviceable material and disposal of unserviceable material within 50 metres lead as per direction of Engineer-in-charge.				
3a	In Cement mortar	5.31		m3	
4	Demolishing R.C.C. work manually / by mechanical means including stacking of steel bars and disposal of unserviceable material within 50 metres lead as per direction of Engineer-in-charge.	43.41		m3	
5	Demolishing cement concrete manually / by mechanical means including disposal of material within 50 metres lead as per direction of Engineer-in-charge. (a) CC (1:4:8)	2.91		m3	
6	Dismantling tile work in floors and roofs laid in cement mortar including stacking material within 50 metres lead. For thickness of tiles 25 mm to 40 mm	595.43		m2	
7	Dismantling old plaster or skirting raking out joints and cleaning the surface for plaster including disposal of rubbish to the dumping ground within 50 metres lead.	1564.97		m2	
8	Earth work in excavation by mechanical means [hydraulic excavator] / manual means in foundation trenches or drains [not exceeding 1.5m in width or 10 m2 on plan], including dressing of sides and ramming of bottoms, lift upto 1.5 m, including getting out the excavated soil as directed, within a lead of 50 m. (a) all kinds of soil	430.85		m3	
9	Filling available excavated earth (excluding rock) in trenches, plinth, sides of foundations etc. in layers not exceeding 20 cm in depth, consolidating each deposited layer by ramming and watering lead up to 50 m and lift upto 1.5 m.	430.85		m3	
10	Providing and laying in position cement concrete of specified grade excluding the cost of centering and shuttering - all work up to plinth level (a). 1:4:8 CC	51.87		m3	

11	Providing and laying in position machine batched and machine mixed design mix M-30 grade cement concrete for reinforced cement concrete work using cement content as per approved design mix including pumping of concrete to site of laying, with admixtures in recommended proportions as per IS: 9103 to accelerate, retard setting of concrete, improve workability without impairing strength and durability as per direction of Engineer in charge. (Rate is without centering and shuttering work) 11(A). all work upto plinth level	121.98		m3	
11B	All work above plinth level upto floor V level	113.13		m3	
12	Centering and shuttering including strutting, propping etc. and removal of form for all height				
12a	(A).Shuttering - For footings, bases of columns etc	260.17		m2	
12b	For plinth beams , Lintel ,beam and Coping shuttering	422.64		m2	
12c	for Column above Plinth	214.88		m2	
12d	for Slab & Chhajjas	441.88		m2	
13	Steel reinforcement for R.C.C. works including strengthening, cutting, bending, placing in position and binding all complete above plinth level .(a).Thermo mechanically Treated bars of grade Fe-500D or more	41764.35		kg	
14	Brick masonry with common burnt clay F.P.S. (non modular) bricks of class designation 7.5 in super structure above plinth level upto floor V level in all shapes and sizes in cement mortar (1:6)	102.84		m3	
15	Half brick masonry with common burnt clay F.P.S. (non modular) bricks of class designation 7.5 in superstructure above plinth level up to floor V level. In cement mortar (1:4)	125.00		m2	
16	Providing and fixing ISI marked flush door shutters conforming to IS : 2202 (Part I) decorative type, core of block board construction with frame of 1st class hard wood and well matched teak 3 ply veneering with vertical grains or cross bands and face veneers on both faces of shutters with mortice lock and S.S. Tower bolt 200 mm size. (a) 35 mm thick including ISI marked Stainless Steel butt hinges (heavy weight) with necessary screws.				
a	D1 - Size:- 0.75x 2.10	22.45		m2	
b	D2 - Size:- 1.00 x 2.10	34.15		m2	
c	D4 - Size:- 1.20 x 2.10	2.38		m2	
17	Providing and fixing 8 to 10 mm thick toughened glass including fitting with all necessary fixtures like hinges, adjoining cleat, floor recess section, transparent print of glass etc.	12.20		m2	
18	Providing and fixing 12 mm thick toughened glass door including fitting with all necessary fixtures like hinges, floor pivot, bottom patch, handle both sides, transparent print of glass etc.	14.02		m2	

19	Providing and fixing double glazed hermetically sealed glazing in aluminium (Powder coating) windows, ventilators and partition etc. with 6 mm thick clear float glass both side, having 12 mm air gap, including providing EPDM gasket, perforated aluminium spacers, desiccants, sealant (Both primary and secondary sealant) etc and with mosquito net (1st quality) as per specifications, drawings and direction of Engineer-in-charge complete.	138.88		m2	
20	Providing and fixing 18 mm thick gang saw cut, mirror polished, pre-moulded and pre-polished, machine cut for kitchen platforms, vanity counters, window sills, facias, drops and similar locations of required size, approved shade, colour and texture laid over 20 mm thick base cement mortar 1:4 (1 cement : 4 coarse sand), joints treated with white cement, mixed with matching pigment, epoxy touch ups, including rubbing, curing, moulding and polishing to edges to give high gloss finish etc. complete at all levels.(a) Granite of any colour and shade - area of slab over 0.50sqm	444.95		m2	
21	Providing and laying vitrified floor tiles in different sizes (thickness to be specified by the manufacturer) with water absorption less than 0.08% and conforming to IS: 15622, of approved make, in all colours and shades, laid on 20mm thick cement mortar 1:4 (1 cement : 4 coarse sand), jointing with grey cement slurry @ 3.3 kg / sqm and Fixing glazed / Ceramic / Vitrified floor tiles with cement based high polymer modified quick-set tile adhesive (Water based) conforming to IS: 15477, in average 3 mm thickness, including routing the joints with white cement and matching pigments etc., complete. (a). size of Tile 600 x 600mm	486.21		m2	
22	Grouting the joints of flooring tiles having joints of 3 mm width, using epoxy grout mix of 0.70 kg of organic coated filler of desired shade (0.10 kg of hardener and 0.20 kg of resin per kg), including filling / grouting and finishing complete as per direction of Engineer-in-charge.(a). size of Tile 600 x 600mm	486.21		m2	
23	Providing and laying Ceramic glazed floor tiles of size 300x300 mm (thickness to be specified by the manufacturer), of 1st quality conforming to IS : 15622, of approved make, in all colours, shades, except White, Ivory, Grey, Fume Red Brown, laid on 20 mm thick bed of cement mortar 1:4 (1 Cement : 4 Coarse sand), jointing with grey cement slurry @ 3.3 kg/ sq.m and Fixing glazed/ Ceramic/ Vitrified floor tiles with cement based high polymer modified quick-set tile adhesive (Water based) conforming to IS: 15477, in average 3mm thickness including pointing the joints with white cement and matching pigments etc., complete.	70.54		m2	

24	Providing and laying Vitrified tiles in different sizes (thickness to be specified by manufacturer), with water absorption less than 0.08 % and conforming to I.S. 15622, of approved make, in all colours & shade, in skirting, riser of steps, over 12 mm thick bed of cement mortar 1:3 (1 cement: 3 coarse sand), jointing with grey cement slurry @ 3.3 kg / sqm including grouting the joint with white cement & matching pigments etc. complete. (a) size of Tile 600 mm x 600 mm	68.21		m2	
25	Providing and fixing 1st quality ceramic glazed wall tiles conforming to IS: 15622 (thickness to be specified by the manufacturer), of approved make, in all colours, shades except burgundy, bottle green, black of any size as approved by Engineer- in-Charge, in skirting, risers of steps and dados, over 12 mm thick bed of cement mortar 1:3 (1 cement : 3 coarse sand) and jointing with grey cement slurry @ 3.3 kg per sqm, and Fixing glazed / Ceramic / Vitrified floor tiles with cement based high polymer modified quick-set tile adhesive (Water based) conforming to IS: 15477, in average 3mm thickness including pointing in white cement mixed with pigment of matching shade complete.	427.31		m2	
26	Plastering with cement mortar including scrubbing, cleaning, finishing smooth, curing, etc complete. (a). 12 m thick (1:3) with a floating coat a neat cement of mix	1270.55		m2	
27	Plastering with cement mortar including scrubbing, cleaning, finishing smooth, curing, etc complete. (a) 20 m thick (1:3) with a floating coat a neat cement of mix - Inside existing bldg.	728.47		m2	
28	18 mm cement plaster in two coats under layer 12 mm thick cement plaster 1:5 (1 cement : 5 coarse sand) and a top layer 6 mm thick cement plaster 1:3 (1 cement : 3 coarse sand) finished rough with sponge.- Outside Plaster	543.97		m2	
29	Providing and applying white cement based putty of average thickness 1 mm of approved brand and manufacturer, over the plastered wall surface with removing white or colour wash by scrapping and sand papering and preparing the surface smooth including necessary repairs to scratches etc. complete.	1999.02		m2	
30	Finishing with Deluxe Multi surface paint system for interiors and exteriors using Primer as per manufacturers specifications : Two or more coats applied on walls @ 1.25 ltr /10 sqm over and including one coat of Special primer applied @ 0.75 ltr / 10 sqm	1999.02		m2	
31	Finishing walls with Premium Acrylic Smooth exterior paint of required shade :New work (Two or more coat applied @ 1.67 ltr / 10 sqm over and including priming coat of exterior primer applied @ 2.20 kg / 10 sqm)	543.97		m2	

32	<p>Providing and fixing false ceiling at all height including providing and fixing of frame work made of special sections, power pressed from M.S. sheets and galvanized with zinc coating of 120 gms/sqm (both side inclusive) as per IS : 277 and consisting of angle cleats of size 25 mm wide x 1.6 mm thick with flanges of 27 mm and 37mm, at 1200 mm centre to centre, one flange fixed to the ceiling with dash fastener 12.5 mm dia x 50mm long with 6mm dia bolts, other flange of cleat fixed to the angle hangers of 25x10x0.50 mm of required length with nuts & bolts of required size and other end of angle hanger fixed with intermediate G.I. channels 45x15x0.9 mm running at the spacing of 1200 mm centre to centre, to which the ceiling section 0.5 mm thick bottom wedge of 80 mm with tapered flanges of 26 mm each having lips of 10.5 mm, at 450 mm centre to centre, shall be fixed in a direction perpendicular to G.I. intermediate channel with connecting clips made out of 2.64 mm dia x 230 mm long G.I. wire at every junction, including fixing perimeter channels 0.5 mm thick 27 mm high having flanges of 20 mm and 30 mm long, the perimeter of ceiling fixed to wall/partition with the help of rawl plugs at 450 mm centre, with 25mm long dry wall screws @ 230 mm interval, including fixing of gypsum board to ceiling section and perimeter channel with the help of dry wall screws of size 3.5 x 25 mm at 230 mm c/c, including jointing and finishing to a flush finish of tapered and square edges of the board with recommended jointing compound , jointing tapes , finishing with jointing compound in 3 layers covering upto 150 mm on both sides of joint and two coats of primer suitable for board, all as per manufacturer's specification and also including the cost of making openings for light fittings, grills, diffusers, cutouts made with frame of perimeter channels suitably fixed, all complete as per drawings, specification and direction of the Engineer in Charge but excluding the cost of painting with : (a).12.5 mm thick tapered edge gypsum moisture resistant board</p>	588.88		m2	
33	<p>Providing and applying fibre reinforced elastomeric liquid water proofing membrane with resilient acrylic polymers having Sun Reflectivity Index (SRI) of 105 on top of concrete roof in three coats @10.76 litre/ 10 sqm. One coat of self-priming of elastomeric waterproofing liquid (dilution with water in the ratio of 3:1) and two coats of undiluted elastomeric waterproofing liquid (dry film thickness of complete application/system not less than 500 microns). The operation shall be carried out after scrapping and properly cleaning the surface to remove loose particles with wire brushes, complete in all respect as per the direction of Engineer-in-Charge.</p>	644.92		m2	

34	Providing & laying 5 to 6mm thick white glazed tiles flooring for terrace using to be laid over 20mm thick cement mortar (1:3) jointing with grey cement slurry @ 3.3 kg / sqm to plain or slop and to be tampered to bring mortar crême out upto surface using, white cement including rounding off the junction and extending them upto 15cm along the wall including water pond test and clearing with water and oxalic acid etc complete as directed.	644.92		m2	
35	Providing and fixing the stainless steel round pipe of 18 gauge staircase railing consisting corner vertical support of 2" dia. Pipe, internal (steps) vertical pipe of 1.5" dia. Pipe and parallel 3nos. Pipes of 0.75" dia. With all fitting, fixtures, screws, nut, bolts, etc. complete as directed by engineer in charge (Grade of ss).	9.20		Rmt	
36	Providing and fixing Structural Glazing with using the 17 Micron anodised of approved colour aluminium section as transium, mullium of size 63.5mm x 38.1mm x 2 mm with using 5 mm thick reflective structural glass and fixed with silicone sealant and spacer tap and at corner sealed neoprene foam dust and Air sealed gasket mirrored including scaffolding etc. complete with all necessary fitting and fixtures for openable window as per Architectural drawing and as directed by EIC	165.34		m2	
37	Providing and fixing 6mm to 8mm thick laminated toughened glass canopy in front entrance portion likely with brushed 304 stainless structure. -Comprise 6mm + 6mm toughened glass.-Plaxo brand stainless steel overhead for glass.-Canopy including rope fitting in SS pipe with necessary clamp, screw etc complete as per instruction by site in charge.	15.44		m2	
38	Providing and applying on wall exterior of Heritage surface texture granules finish of Bakelite Hylam Limited (No.21-3005, 3006, 3007, 3008, 3013, 3014, 3015 and 3016). trowelled over 20 mm thick mala plastered (Two coat of 12 mm in CM 1:3 & 8 mm coat in CM 1:1) sub strata to get an average finish coat thickness of 0.08 to 1.2 mm comprising of three components viz. Dry granules, Granules, bonding agent and top coat of glossy finish (Dry granules shall be made from Silica sand, pigments, chiefly inorganic) homopolymer emulsion mix etc, of Bakelite Hylam product banding agent made of acrylic copolymer emulsion, broad spectrum fungicide of Bakelite Hylam product etc and top coat made from solvent based acrylic polymer of Bakelite Hylam product including scaffolding.	338.65		m2	
39	Providing and fixing 8 to 10mm thick stainless steel sheet (304) with CNC cutting as per Architect design and instruction of site in-charge including all necessary fittings etc. complete.	54.39		m2	

40	Steel work in built up tabular (round, square or rectangular hollow tubes etc.) trusses, ladder etc. including cutting, hoisting, fixing in position and applying a priming coat of approved steel primer & Painting with SYNTHETIC ENAMEL PAINT of approved brand and manufacture to give even shade (Two or more coats on new work), including welding and bolted with special shaped washers etc. complete.(a). Hot finished welded type tubes	122.81		Kg	
41	Dismantling aluminium / Gypsum partitions, doors, windows, fixed glazing and false ceiling, stair case railing including disposal of unserviceable surplus material and stacking of serviceable material within 50 meters lead as directed by Engineer-in-charge.- Staircase railing - Existing staircase railing (L= 9.20 m & 1.04 m ht.)	9.66		m2	
Total of Part - A Cost of Civil work					

PART - B : Plumbing Work					
It.	Description	Qty.	Rate	Unit	Amount
1	Dismantling W.C. Pan / W.B. / Gryser / Urinal / mirror of all sizes including disposal of dismantled materials i/e malba all complete as per directions of Engineer-in-Charge.	26.00		each	
2	Disconnecting damaged overhead/terrace PVC water storage tank of any size from water supply line and removing from the terrace including shifting at ground level as per direction of Engineer-in-charge.	2.00		each	
3	Dismantling 15 to 40 mm dia G.I. pipe / rain water pipe including stacking of dismantled pipes (within 50 metres lead) as per direction of Engineer-in-Charge.(a) Internal Work- Exposed on wall	316.00		m	
4	Providing & Fixing Wall hung WC – 490 x 360 x 325 mm (JADE, PBW WWC 6011, rimless with P trap 180mm rough in with UF soft close seat cover & fixing accessories, PLUMBER) and Fixing G.I. / CPVC inlet connection for flush pipe connecting with W.C. Pan for concealed flush valve 25mm dia. (make Plumber model no.UT-6601), Angle Cock Two - way with wall flange 15mm dia. Make Plumber (model no. AZT-2155),Bidet spray "italian" with C.P. Make Plumber (model no. 1904M) & Toilet Paper holder - EG 7007etc cutting and making good the walls and floors wherever required including all labours and material & all necessary accessories as directed by Engineer in charge	11.00		each	

5	Providing and fixing Counter top basin 560 x 420 x 140 mm (ALMAS PBW – CTB 5308 PLUMBER) with 32 mm C.P. brass waste couplin of standard pattern, including 32 mm dia. Flexible pvc waste pipe,15mmdia.C.P. brass stop cock (Concealed) of approved quality IS:8931,15mm dia. and 45cm long Un-plasticised PVC Connection pipe with brass union, liquid soap dispenser (Metal bottle - SQ 7005, PLUMBER) & Swan neck with swivel spout (AZT 1102 , PLUMBER)etc& all accessories as directed by Engineer-in-charge	14.00		each	
6	Providing and fixing white vitreous china flat back half stall urinal of size 580x380x350 mm with white PVC automatic flushing cistern, with fittings, standard size C.P. brass flush pipe, spreaders with unions and clamps (all in C.P. brass) with waste fitting as per IS : 2556, C.I. trap with outlet grating and other couplings in C.P. brass, including painting of fittings and cutting and making good the walls and floors wherever required : (a).Range of two half stall urinals with 5 litre P.V.C. automatic flushing cistern				
	Gent Toilet (G.F. - 02 nos Urinals with 5 litre P.V.C. automatic flushing cistern)	1.00		each	
7	Providing and fixing Stainless Steel A ISI 304 (18/8) kitchen sink as per IS:13983 with C.I. brackets and stainless steel plug 40 mm, including painting of fittings and brackets, cutting and making good the walls wherever required including 32mm dia. Flexible pvc waste pipe,15mm dia. C.P. brass stop cock (Concealed)of approved quality IS:8931,15mm dia. and 45cm long Unplasticised PVC Connection pipe with brass union and Sink cock (CFT 2107 PLUMBER) etc as directed by Engineer in charge: (a). Kitchen sink without drain board - Size 610 x 460 mm bowl depth 200mm & all accessories	2.00		each	
8	Providing and fixing C.P. brass bib cock of approved quality conforming to IS:8931 :15 mm nominal bore (PST 2104 , Make Plumber)	14.00		each	
9	Providing and fixing C.P. brass stop cock (concealed quarter turn) of standard design and of approved make conforming to IS:8931				
	(a). 15 mm nominal bore (make Plumber model no. UF- 0415 or equivalent)	2.00		each	
10	Providing and fixing gun metal non- return valve of approved quality (screwed end) :				
(a)	25 mm nominal bore - Horizontal	10.00		each	
(b)	25 mm nominal bore - vertical	10.00		each	
(c)	50 mm nominal bore - Horizontal	1.00		each	
11	Providing and fixing ball valve (brass) of approved quality, High or low pressure, with plastic floats complete : (a).25 mm nominal bore				
	For Overhead tank	5.00		each	
12	Providing and fixing Chlorinated Polyvinyl Chloride (CPVC) pipes, having thermal stability for hot & cold water supply including all CPVC plain & brass threaded fittings This includes jointing of pipes & fittings with one step CPVC solvent cement,				

	trenching, refilling & testing of joints complete as per direction of Engineer-in-Charge. (a).External work				
(a)	50mm nominal outer dia Pipes - For Water supply	10.00		m	
(b)	150mm nominal outer dia Pipes - For SWD (Below GL)	80.00		m	
(c)	100mm nominal outer dia Pipes - For SWD	87.00		m	
(d)	75mm nominal outer dia Pipes - For SWD	113.00		m	
13	Providing and fixing Chlorinated Polyvinyl Chloride (CPVC) pipes, having thermal stability for hot & cold water supply, including all CPVC plain & brass threaded fittings, including fixing the pipe with clamps at 1.00 m spacing. This includes jointing of pipes & fittings with one step CPVC solvent cement and testing of joints complete as per direction of Engineer in Charge. Internal work - Exposed on wall				
(a).	50m nominal outer dia Pipes - For Water supply	44.00		m	
(b)	25mm nominal outer dia Pipes - For Water supply	108.00		m	
14	Providing and fixing Chlorinated Polyvinyl Chloride (CPVC) pipes, having thermal stability for hot & cold water supply, including all CPVC plain & brass threaded fittings, i/c fixing the pipe with clamps at 1.00 m spacing. This includes jointing of pipes & fittings with one step CPVC solvent cement and the cost of cutting chases and making good the same including testing of joints complete as per direction of Engineer in Charge. Concealed work, including cutting chases and making good the walls etc.				
(a)	25mm nominal outer dia Pipes - For Water supply	67.00		m	
(b)	15mm nominal outer dia Pipes - For Water supply	62.00		m	
(c)	20mm nominal outer dia Pipes - For Water supply	45.00		m	
15	Constructing brick masonry manhole in cement mortar 1:4 (1 cement : 4 coarse sand) with R.C.C. top slab with 1:2:4 mix (1 cement : 2 coarse sand : 4 graded stone aggregate 20 mm nominal size), foundation concrete 1:4:8 mix (1 cement : 4 coarse sand : 8 graded stone aggregate 40 mm nominal size), inside plastering 12 mm thick with cement mortar 1:3 (1 cement : 3 coarse sand) finished with floating coat of neat cement and making channels in cement concrete 1:2:4 (1 cement : 2 coarse sand : 4 graded stone aggregate 20 mm nominal size) finished with a floating coat of neat cement complete as per standard desig.				
(a)	Inside size 90 x 80 cm and 45 cm deep including C.I. cover with frame (light duty) 455 x 610 mm internal dimensions, total weight of cover and frame to be not less than 38 kg (weight of cover 23 kg and weight of frame 15 kg): With common burnt clay F.P.S. (non modular) bricks of class designation 7.5	8.00		each	
16	Extra for depth for manholes:				
(a)	Size 90 x 80 cm - With common burnt clay F.P.S. (non modular) bricks of class designation 7.5	5.00		m	

17	Providing and fixing square-mouth S.W. gully trap class SP-1 complete with C.I. grating brick masonry chamber with water tight C.I. cover with frame of 300 x300 mm size (inside) the weight of cover to be not less than 4.50 kg and frame to be not less than 2.70 kg as per standard design:150mm x 100mm size P type (with Common burnt clay F.P.S (non modular) bricks of class designation 7.5	6.00		each	
18	Providing and fixing 100 mm sand cast Iron grating for gully trap (N.T.).	32.00		each	
19	Providing and fixing 600x450 mm beveled edge mirror of superior glass (of approved quality) complete with 6 mm thick hard board ground fixed to wooden cleats with C.P. brass screws and washers complete.	14.00		each	
20	Providing and placing on terrace (at all floor levels) polyethylene water storage tank, IS : 12701 marked, with cover and suitable locking arrangement and making necessary holes for inlet, outlet and overflow pipes but with fittings and without the base support for tank.	10000		per lit	
21	Providing and fixing Wall mixer telephonic with "L" shaped tubular bend set for Overhead shower (AZT 3101LB, PLUMBER, single flow hand shower (SLM 8001,Slim with grey face plate chrome plated ,1.5 mtr. Extendable flexible tube & holder - PLUMBER) with over head rain shower (ITP 5001 - Goal 125mm with anti lime jets with shower arm & wall flange - PLUMBER) etc of superior quality complete	8.00		each	
22	Providing and fixing Towel rack with hook (600mm) - Model no. EG 7724 PLUMBER of superior quality complete	14.00		each	
23	Providing and fixing Shop dish with Metak dish - Model no. UM 0913 PLUMBER of superior quality complete	8.00		each	
24	Providing and fixing Wall mixer without telephonic with "L" shaped tubular bend set for Overhead shower (AZT 3101LB, PLUMBER, with over head rain shower (ITP 5001 - Goal 125mm with anti lime jets with shower arm & wall flange - PLUMBER) etc of superior quality complete	4.00		each	
Total of Part - B					

Part - C Electrical work					
It.	Description of Item	Quantity	Rate	Unit	Amount
1	Point wiring for Light / Bell with 2-1.5 sq.mm & b Wearthwire of 1.5 sq.mm (Green) both are of ISI marked 1.1 KV grade FRLS PVC insulated multistrand copper wires, in following type of pipe to be erected concealed in / on surface on wall/ceiling complete with 6A Modular type switch / bell push & accessories and earth continuity of following type, erected on PVC / Metallic box, single mounting base frame covered with textured / metallic front plate modules erected on / in wall / ceiling as per pipe erected, with necessary Lamp holder / ceiling rose / H.D. Connector as directed. (a) with medium class Rigid PVC pipe and accessories Cat- III	88		Pt	
2	Point wiring for secondary light point with 2-1.5 sq. mm & earthwire of 1.5 sq. mm (green) both are of ISI marked 1.1 KV grade FRLS PVC insulated multistrand copper wires, in following type of pipe to be erected concealed in / flushed on wall / ceiling, complete with earth continuity and necessary connection with primary light with accessories erected on Metal / PVC box covered with 3 mm thick PC (Polycarbonet) / Acrylic sheet for open / concealed wiring with necessary Lamp holder / ceiling rose / H.D. Connector as directed. Note:- Maximum up to 6 mtrs length, excess will be considered as Mains for Secondary Point (a) with medium class Rigid PVC pipe and accessories	53		Pt	
3	Point wiring for Two Way Controlled Light Point with 2-1.5 sq.mm & earthwire of 1.5 sq.mm (green) both are of ISI marked 1.1 KV grade FRLS PVC insulated multistrand copper wires, in following type of pipe to be erected concealed in / flushed on wall / ceiling complete with 6A Tissino Type ISI marked accessories with earth continuity erected on Metal/PVC box covered with 3 mm thick PC (Polycarbonet) / Acrylic sheet with necessary Lamp holder / ceiling rose/ H.D. Connector as directed. (a) with medium class Rigid PVC pipe and accessories	16		Pt	
4	Point wiring for FAN with 2-1.5 sq.mm & earthwire of 1.5 sq.mm (Green) both are of .ISI marked 1.1 KV Grade FRLS PVC insulated multistrand copper wires, in following type of pipe to be erected concealed in / flushed on wall/ceiling complete with 6A Modular type switch and hum free EME four or more step type electronic fan regulator with separately mounted and accessories with earth continuity of following type erected on PVC / Metallic box, single mounting base frame covered with textured/metallic front plate modules erected on / in wall / ceiling as per pipe erected with necessary ceiling rose / H.D. Connector as directed. (a) with medium class Rigid PVC pipe and accessories. Cat. III	26		Pt	

5	Point wiring for Individual Plug with & earthwire of 1.5 sq. mm (Green) both are of ISI marked 1.1 KV grade FRLS PVC insulated multistrand copper wires, in following type of to be erected concealed in / on surface of wall / ceiling complete with Modular type switch & 5 pin Plug erected on PVC / Metallic box covered with appropriate front plate modules erected on / in wall / ceiling as per pipe erected with following type of accessories. [I] For 6A Plug with 2-1.5 sq.mm Cu. Wire, (a) with medium class Rigid PVC pipe and accessories Cat. III	35		Pt	
6	Point wiring for Looped Plug with 6A Modular type switch & 5 pin socket erected on PVC / Metallic box, single mounting base frame covered with textured / metallic front plate modules erected on / in wall / ceiling with following type accessories Cat. III	21		Pt	
7	Point wiring for Individual Plug with & earthwire of 1.5 sq.mm (Green) both are of ISI marked 1.1 KV grade FRLS PVC insulated multistrand copper wires, in following type of to be erected concealed in / on surface of wall / ceiling complete with Modular type switch & 5 pin Plug erected on PVC / Metallic box covered with appropriate front plate modules erected on / in wall / ceiling as per pipe erected with following type of accessories. [II] For 16A Plug with 2-2.5 sq.mm Cu. Wire, (a) with medium class Rigid PVC pipe and accessories Cat. III	16		Pt	
8	Point wiring for Individual Plug with & earthwire of 1.5 sq.mm (Green) both are of ISI marked 1.1 KV grade FRLS PVC insulated multistrand copper wires, in following type of to be erected concealed in / on surface of wall / ceiling complete with Modular type switch & 5 pin Plug erected on PVC / Metallic box covered with appropriate front plate modules erected on / in wall / ceiling as per pipe erected with following type of accessories. [III] For 16A Plug with 2-4 sq.mm Cu. Wire. (a) with medium class Rigid PVC pipe and accessories Cat. III	26		Pt	
9	Providing following type of Modular Type Accessories mounted with pvc / metallic box, single mounting base frame covered with textured / metallic front plate, modules erected with necessary connection. As desired by Engineer-in-charge (22) 16/20/25 Amp. Modular Starter for Motor / A.C. Unit Complete	17		Pt	
10	Providing following type of Modular Type Accessories mounted with pvc / metallic box, single mounting base frame covered with textured / metallic front plate, modules erected with necessary connection. As desired by Engineer-in-charge. (19) Modular Indicating Call Bell Cat.III	8		Pt	
11	Providing following type of Modular Type Accessories mounted with pvc / metallic box, single mounting base frame covered with textured / metallic front plate, modules erected with necessary connection as desired by Engineer In charge. (20) Modular Buzzer Cat.III	8		Pt	

12	Providing & erecting Switch board for Computer or electric apparatus consisting of following items in single board erected on PVC / Metal board with 3 mm thick PC (Polycarbonate) / Acrylic sheet erected as directed 1 no. 6A/16A universal plug-switch combined. 4 nos. 6A Switch 4 nos. 6A 5 pin Plug [B] For Modular Type Accessories	2		Pt	
13	Providing following type of Modular Type Accessories mounted with pvc / metallic box, single mounting base frame covered with textured / metallic front plate, modules erected with necessary connection. As desired by Engineer In charge. (7) Blank Plate Single Cat.III	20		Ea.	
14	Providing following type of Modular Type Accessories mounted with pvc / metallic box, single mounting base frame covered with textured / metallic front plate, modules erected with necessary connection. As desired by Engineer-in-charge (3) Two Pin/RJ-11 Telephone Socket [A] For One Gang	15		Ea.	
15	Providing following type of Modular Type Accessories mounted with pvc / metallic box, single mounting base frame covered with textured / metallic front plate, modules erected with necessary connection as desired by Engineer-in-charge (4) TV Co-axial Socket outlet cat.III	11		Ea.	
16	Providing following type of Modular Type Accessories mounted with pvc / metallic box, single mounting base frame covered with textured / metallic front plate, modules erected with necessary connection. As desired by Engineer-in-charge (5) Electronic hum Free four or more steps EME Fan regulator cat.III	26		Ea.	
17	Providing following type of Modular Type Accessories mounted with pvc / metallic box, single mounting base frame covered with textured / metallic front plate, modules erected with necessary connection. As desired by Engineer-in-charge (8) Modem Jack for Computer Open RJ-45 Cat. III	2		Ea.	
18	Providing following type of Modular Type Accessories mounted with pvc / metallic box, single mounting base frame covered with textured / metallic front plate, modules erected with necessary connection. As desired by Engineer-in-charge (16) 32 Amp. DP Main Switch Operating with Energy Key Tag Cat.III	8		Ea.	
19	Mains with 1.1 KV grade FRLS PVC insulated ISI marked stranded Copper conductor wire in following type of pipe to be erected concealed in /flushed on wall/ceiling, with 1.5 sq. mm copper conductor FRLS PVC insulated stranded wire of green colour for earth continuity of following size (a) with medium class Rigid PVC pipe and accessories (b) 2 wire 2.5 sq. mm	2005		Mtr.	

20	Mains with 1.1 KV grade FRLS PVC insulated ISI marked stranded Copper conductor wire in following type of pipe to be erected in / on wall / ceiling with 2.5 sq. mm copper conductor FRLS PVC insulated stranded wire of green colour for earth continuity of following size (a) with medium class Rigid PVC pipe and accessories (a) 2 wire 4 sq. mm	650		Mtr.	
21	Mains with 1.1 KV grade FRLS PVC insulated ISI marked stranded Copper conductor wire in following type of pipe to be erected in / on wall / ceiling with 2.5 sq. mm copper conductor FRLS PVC insulated stranded wire of green colour for earth continuity of following size__ (a) with medium class Rigid PVC pipe and accessories,___ (b) 2 wire 6 sq. mm	240		Mtr.	
22	Supplying & erecting approved make LAN cable of following size in existing pipe as per direction [c] CAT - 6	390		Mtr.	
23	Providing & Erecting approved make following size of TV Co-axial flexible cable comprising inner conductor of solid bare copper insulated with Foam PE & Secondary conductor made of poly - Aluminium film bonded Al. Braids @ suitable coverage overall sheathed with black PVC insulation.___ e).RG-11	470		Mtr.	
24	Providing and erecting Approved make Ceiling fan with double ball bearing ISI mark with condenser A.C. 230V.50 c/s.1200 mm. sweep complete, canopy and 30 cms. down rod erected on existing hook or clamp with 24/0.2 , 3 core flexible wire with earthing. [Make shall be approved by Engineer in charge]	26		Ea.	
25	Supplying and erecting 19 / 20 mm. nominal bore Medium Class M.S. Pipe down rod erected duly painted for fan complete with necessary 24/ O.20, 3 core flexible wire with earthing.	26		Mtr.	
26	Supplying & erecting Fan Hook of 10 mm M.S. Round bar grouted in RCC slab with Making the site as original.	26		Ea.	
27	Supplying & erecting fan hook box of 10 mm M.S. round bar bounded to the RCC bars up to 50mm length each side and pierced through a 16 Gauge M.S. box / Heavy Duty PVC box complete erected concealed in Ceiling with necessary finishing.	26		Ea.	
28	Providing 2.5mm.thick laminated acrylic sheet to cover the fan hook or Fan box.	26		Ea.	

29	<p>Supplying and erecting LED indoor fittings with LEDs of wattage 0.2 Watt to 0.5 Watt assembled on single MCPCB, with housing used as a heat sink shall be made of thick sheet Steel conforming to IS: 513/CRCA polyester powder coated and high U.V. & corrosion resistance with diffuser and/or Polycarbonate optics with company mark/name,___ 120 to 300 V, Power Factor more than 0.9, THD < 10 %,___CCT 4000 K to 6500K, Uniformity ratio >0.7, Luminaire efficiency> 85 lumens/watt,___ LED driver efficiency > 85 %___ CREE / OSRAM / PHILIPS Lumileds / NICHIA / SEOUL/Bridgelux(U.S.A.) make LED used for luminaire. (Each fitting___ required LM-79 & LM-80 Certificates)___ (A) Tube Light with integral/ non-integral driver___ (d) 20-22 Watts, Surge - 4KV,IP-20, 4 feet Cat-III</p>	6		Ea.	
30	<p>Supplying and erecting LED indoor fittings with LEDs of wattage 0.2 Watt to 0.5 Watt assembled on single MCPCB, with housing used as a heat sink shall be made of thick sheet Steel conforming to IS: 513/CRCA polyester powder coated and high U.V. & corrosion resistance with diffuser and/or Polycarbonate optics with company mark/name,___ 120 to 300 V,Power Factor more than 0.9, THD < 10 %,- CCT 4000 K to 6500K, Uniformity ratio >0.7,___ Luminaire efficiency> 85 lumens/watt,___ LED driver efficiency > 85 %,___ CREE / OSRAM / PHILIPS Lumileds / NICHIA / SEOUL/ Bridgelux (U.S.A.) make LED used for luminaire. (Each fitting required LM-79 & LM-80 Certificates)___ (C) Square/ Circular Surface/Recessed Mounted Downlight with provision for spring loaded mounting clips complete. ___ (C) 20-24 watts, Surge-4 KV Cat-III</p>	114		Ea.	
31	<p>Supplying and erecting LED indoor fittings with LEDs of wattage 0.2 Watt to 0.5 Watt assembled on single MCPCB, with housing used as a heat sink shall be made of thick sheet Steel conforming to IS: 513/CRCA polyester powder coated and high U.V. & corrosion resistance with diffuser and/or Polycarbonate optics with company mark/name,___ 120 to 300 V,Power Factor more than 0.9, THD < 10 %,___ CCT 4000 K to 6500K, Uniformity ratio >0.7,Luminaire efficiency> 85 lumens/watt,___ LED driver efficiency > 85 %,___ CREE / OSRAM / PHILIPS Lumileds / NICHIA / SEOUL/ Bridgelux (U.S.A.) make LED used for luminaire. (Each fitting required LM-79 & LM-80 Certificates)___ (C) Square/ Circular Surface/Recessed Mounted Downlight with provision for spring loaded mounting clips complete.___(b) 10-15 watts, Surge-4 KV Cat-III</p>	12		Ea.	

32	Supplying and erecting LED indoor fittings with LEDs of wattage 0.2 Watt to 0.5 Watt assembled on single MCPCB, with housing used as a heat sink shall be made of thick sheet Steel conforming to IS: 513/CRCA polyester powder coated and high U.V. & corrosion resistance with diffuser and/or Polycarbonate optics with company mark/name___ 120 to 300 V,Power Factor more than 0.9, THD < 10 %,___ CCT 4000 K to 6500K, Uniformity ratio >0.7,___ Luminaire efficiency> 85 lumens/watt,___ LED driver efficiency > 85 %,___ CREE / OSRAM / PHILIPS Lumileds / NICHIA / SEOUL/ Bridgelux (U.S.A.) make LED used for luminaire. (Each fitting required LM-79 & LM-80 Certificates) (I) Mirror Light 5 Watts, wall mounted	2		Ea.	
33	Supplying and erecting LED indoor fittings with LEDs of wattage 0.2 Watt to 0.5 Watt assembled on single MCPCB, with housing used as a heat sink shall be made of thick sheet Steel conforming to IS: 513/CRCA polyester powder coated and high U.V. & corrosion resistance with diffuser and/or Polycarbonate optics with company mark/name___ 120 to 300 V,Power Factor more than 0.9, THD < 10 %,___ CCT 4000 K to 6500K, Uniformity ratio >0.7,___ Luminaire efficiency> 85 lumens/watt,___ LED driver efficiency > 85 %,___ CREE / OSRAM / PHILIPS Lumileds / NICHIA / SEOUL/ Bridgelux (U.S.A.) make LED used for luminaire. (Each fitting required LM-79 & LM-80 Certificates) (B) LED Lamps integral type,cool white with PC diffuser suitable for B22 LAMP holder (b) 5 to 8 watts	8		Ea.	
34	Providing & Erecting following Shock proof tissino type accessories erected on 3 mm thick PC (Polycarbonate) sheet in PVC/ Metal Box erected on wall / ceiling. (8) Bakelite lamp holder	8		Ea.	
35	Supplying & erecting approved make low noise decorative exhaust fan having size 200mm with 1350 RPM with square frame ABS body with inbuilt lowers & square frame.	15		Ea.	
36	Providing suitable M.S. louver shutter of the Exhaust fan.	15		Ea.	
37	Miniature circuit breaker single pole 6A to 32A suitable to operate on 240 V A.C. system and having breaking capacity 10 KA to be erected in existing box. confirming to IS 8828/1996 with ISI Mark Cat. III	116		Ea	
38	Providing & erecting 240 V MCB double pole switch for motor & inductive load (C Curve) having 10 KA breaking capacity & confirms to IS : 8828 in existing box having following capacity (A) 6 to 32 Amp. Cat.III	2		Ea	
39	Providing & erecting 240 V MCB double pole switch for motor & inductive load (C Curve) having 10 KA breaking capacity & confirms to IS: 8828 in existing box having following capacity (B) 40 Amp. Cat. III	2		Ea	
40	Plastic enclosure fitted with DIN rail suitable for incorporating Three / Four nos. MCB	2		Ea	

41	Sheets steel powder coated enclosure suitable for incorporating One/Two nos. MCB.	2		Ea	
42	Providing and erecting Sheet Steel powder coated MCB distribution board - flush / surface mounted fitted with busbar, neutral link, earth bar and DIN rail, confirming to IS 13032 and BS 5486-1986 without MCB to house appropriate nos. of MCBs.(The DBs should be used of same company of MCB to be used)__(N) Three phase 8 way SS Double door for horizontal single phase outgoing	3		Ea	
43	Providing and erecting Sheet Steel powder coated MCB distribution board - flush / surface mounted fitted with busbar, neutral link, earth bar and DIN rail, confirming to IS 13032 and BS 5486-1986 without MCB to house appropriate nos. of MCBs.(The DBs should be used of same company of MCB to be used)__(L) Three phase 6 way SS Double door for single phase outgoing horizontal box	1		Ea	
44	The Above all items of MCB, DB the cost of erection on New angle iron frame add following.__[B] above single phase 8 way and all three phase DBs.	4		Ea	
45	Approved make ELCBs / RCCBs conforming to IS: 12640 and having sensitivity of 30 mA and Short Circuit withstand capacity of 6 KA and suitable for operation on single phase 240 V. having characteristic of quick action & tripping with all advance feature & do not incorporate any electronic component. for following Max. rating erected as directed (ii) 40Amps. DP Cat. III	11		Ea	
46	Approved make ELCBs / RCCBs conforming to IS: 12640 and having sensitivity of 30 mA and Short Circuit withstand capacity of 6 KA and suitable for operation on single phase 240 V. having characteristic of quick action & tripping with all advance feature & do not incorporate any electronic component. for following Max. rating erected as directed (i) 25 Amps.DP Cat. III	2		Ea	
47	Providing & erecting 415 V MCB Four Pole for Motor & Inductive Load (C Curve) having 10KA breaking capacity & confirms to IS :8828 in existing box having following capacity (a) 6 to 32 Amp.	4		Ea	
48	Providing & erecting 415 V MCB Four Pole for Motor & Inductive Load (C Curve) having 10KA breaking capacity & confirms to IS :8828 in existing box having following capacity (b)40 Amp.	2		Ea	
49	Providing & erecting 415 V MCB Four Pole for Motor & Inductive Load (C Curve) having 10KA breaking capacity & confirms to IS :8828 in existing box having following capacity (c)63 Amp.	8		Ea	
50	Approved make Three pole moulded case circuit breaker having breaking capacity ICU of 25 K.A. at 415 V having normal current rating up to 25 A to 100A. with Fixed thermal & magnetic release suitable to work on A.C. supply 50 c/s. with all internal connections & complete erected in existing 16 G.M.S. housing. Cat III	2		Ea	

51	Approved make Three pole-moulded case circuit breaker having breaking capacity / strength ICU of 35 K.A. at 415 V. having Normal current rating up to 200A.with variable Thermal & magnetic release suitable to work on A.C.supply 50 c/s. with all internal connections & complete erected in existing 16 G.M.S. housing.	2		Ea	
52	Providing & erecting Medium Voltage Danger Notice Board sticker of standard size	3		Ea	
53	Providing and erecting Annealed bare Copper wire 8 to 16 SWG.	10		Ea	
54	Providing and erecting HOT deep Galvanised iron strip wire 8 to 16 SWG.	20		Ea	
55	Supplying & erecting in earthpit of minimum bore dia. 225mm size ASH or approved make Safe Earthing Electrode consisting Pipe-in-Pipe Technology as per IS 3043-1987 made of corrosion free G.I.Pipes having Outer pipe dia of 80 mm having 80-200 Micron galvanising, Inner pipe dia of 40 mm having 200-250 Micron galvanising, connection terminal dia of 14 mm with constant ohmic value surrounded by highly conductive compound with high charge dissipation suitable for following type of applications.____ [B] For Electrical installation up to 11 KV located in other than normal soil i.e. Soft Rock, Marshy Soil etc. -Length of Pipe: 2 mtr -Back filling Compound :1 no. Bag of 25 Kg.	4		Ea	
56	Supplying & erecting in earth pit of minimum bore dia. 225mm size ASH or approved make Safe Earthing Electrode consisting Pipe-in-Pipe Technology as per IS 3043-1987 made of corrosion free G.I. Pipes having Outer pipe dia of 80 mm having 80-200 Micron galvanising, Inner pipe dia of 40 mm having 200-250 Micron galvanising, connection terminal dia of 14 mm with constant ohmic value surrounded by highly conductive compound with high charge dissipation suitable for following type of applications. [C] For Electrical Installation covering Transformer Neutrals, Lightning arrester Earthing, A.C.Plant & Sensitive Computer System (like Automation, SCADA)i.e. independent Earthing located in other than normal soil i.e. Soft Rock, Marshy Soil etc. -Length of Pipe: 3 Mtrs. -Back filling Compound :2 nos Bags of 25 Kg.	8		Ea.	
57	Providing and erecting required size HOT deep Galvanised iron strip for earthing of H.T. , OCB/ ACB/ Transformer LT panel board, Motors etc. using proper clamp.	50		Kg.	
58	Providing and erecting required size Copper strip for earthing of H.T. OCB / ACB / Transformer, LT panel board, Motors etc. using copper clamp.	50		Kg.	
59	Mains with ISI marked, 1.5KV grade electrolyte multi stranded, annealed copper conductor with heat resistant PVC insulated conforms to IS 694, IEC - 227 erected in existing pipe of following size with required size of copper lugs, nuts and bolts if required.____(e) One wire 6.00 sq. mm	50		Mtr.	

60	Providing one bag of 30 Kg. Additional Back Filling Compound (BFC) suitable for safe earthing device.	50		Mtr.	
61	Providing and erecting XLPE (IS:7098)(I)-88 ISI armoured cable multistrandAluminium conductor for 1.1 KV. to be laid on wall with necessary clamps or in existing trench / pipe of following size of cables (C) 4 core 10 Sq. mm	650		Mtr	
62	Providing and erecting XLPE (IS:7098)(I)-88 ISI armoured cable multistrandAluminium conductor for 1.1 KV. to be laid on wall with necessary clamps or in existing trench / pipe of following size of cables__ (d) 4 core 16 Sq. mm	300		Mtr	
63	Providing and erecting XLPE (IS:7098)(I)-88 ISI armoured cable multistrandAluminium conductor for 1.1 KV. to be laid on wall with necessary clamps or in existing trench / pipe of following size of cables (C) 3 1/2 core 70 Sq. mm (35 Sq. mm 1/2 core)	100		Mtr	
64	Providing and erecting XLPE (IS:7098)(I)-88 ISI armoured cable multistrand Aluminium conductor for 1.1 KV. to be laid on wall with necessary clamps or in existing trench / pipe of following size of cables(B) 3 1/2 core 50 Sq. mm (25 Sq.1/2 mm core)	40		Mtr	
65	Providing & laying approved make Double walled corrugated pipes (DWC) of polyethylene (conforming to IS 14930 II) with necessary connecting accessories of same material at required depth for laying of cable. below ground / road surface for enclosing cable and back filling the same to make ground as per original.(A)50 mm dia	200		Mtr	
66	Providing & laying approved make Double walled corrugated pipes (DWC) of polyethylene (conforming to IS 14930 II) with necessary connecting accessories of same material at required depth for laying of cable. below ground / road surface for enclosing cable and back filling the same to make ground as per original.__(B)90 mm dia	20		Mtr	
67	Providing and, fixing heavy duty flange type brass cable gland with rubber ring for PVC insulated armoured cable complete without going tails, insulating tape etc for following size of cables. (d) 2 to 4 core 10 Sq. mm	10		Ea	
68	Providing and, fixing heavy duty flange type brass cable gland with rubber ring for PVC insulated armoured cable complete without going tails, insulating tape etc for following size of cables. (e) 2 to 4 core 16 Sq. mm	10		Ea	
69	Providing and, fixing heavy duty flange type brass cable gland with rubber ring for PVC insulated armoured cable complete without going tails, insulating tape etc for following size of cables.(C) 3 & 1/2 core 70 Sq. mm	2		Ea	
70	Providing and, fixing heavy duty flange type brass cable gland with rubber ring for PVC insulated armoured cable complete without going tails, insulating tape etc for following size of cables. (B) 3 & 1/2 core 35/50 Sq. mm	02		Ea	

71	Solderless crimping type Aluminium lugs conforming to IS suitable for cable of following size evenly crimped with high pressure tool & connected to switchgear terminals with brass/cadmium plated nut bolts in an approved manner.__(B) 10 Sq.mm	82		Ea	
72	Solderless crimping type Aluminium lugs conforming to IS suitable for cable of following size evenly crimped with high pressure tool & connected to switchgear terminals with brass/cadmium plated nut bolts in an approved manner. (F) 70 Sq.mm.	8		Ea	
73	Solderless crimping type Aluminium lugs conforming to IS suitable for cable of following size evenly crimped with high pressure tool & connected to switchgear terminals with brass/cadmium plated nut bolts in an approved manner. (E) 35/50 Sq.mm.	08		Ea	
74	Providing & erecting weather proof, dust & vermin proof, floor mounted front operated indoor type cubical panel board having IP-64 protection made from 14 SWG thick CRC M.S. sheet for outer body & doors, 16 SWG thick CRC M.S.sheet for internal partitions with necessary supporting angles, flats including cutting, bending, drilling, welding, riveting with internal partitions & cable alley as per requirements & instruction of engineer-in-charge with erection of supplied switch gears, BUSBARS, with suitable size of inter connecting PVC copper wire / copper-aluminium strips, rubber grommets, rib, bakelite control fuses for measuring instruments, earth bus & earth bolts, foundation flange - bolts-base Plates, sufficient nos. of hinged doors, handles with locking arrangement and rubber gasket complete. The Panel shall be painted with epoxy powder coating. (The rates excludes the cost of switchgears, bus bars, inter connecting mains & Copper Aluminium strips, meters, Fuses etc. The dimension shall be measured excluding base beams) The panel shall be supplied with following approved manufacturers with following size.(A) The standard companies switch gear shall be used and only manufacturers at CPRI approved factory and shall be certified by that company whose switch gears are used after fabrication for beneficial use (ii) with 550 mm. Depth	1		SQ.Mtr	
	(B) locally fabricated panel board (ii) With 550 mm. Depth	1		SQ..Mtr	
75	Providing and erecting busbar chamber confirming to IS-375 fabricated from 16 G.M.S. sheet, dust & vermin proof having hinged door with rubber gasket and necessary busbar supports with Aluminiumbusbar having current density not more than 0.8 Amp. / sq.mm (Rated current / cross section area) duly wrapped with colour insulation tape for phase sequence, three phase & neutral each Suitable for following current capacity with necessary painting mounted on wall or pedestal frame of required size with necessary connections., (B) Suitable for 200 Amp. Capacity	1		Rn.Mtr	

76	Supplying and erecting approved make panel mounting type Digital Voltmeter having 3 digits LED display, 0 to 750 AC Volts range erected on existing panel board with all connection, wiring etc. with manufacturers calibration certificate.	1		Ea.	
77	Supplying and erecting approved make panel mounting type Digital Ammeter having 3 digits LED display, external CT operated, calibrated for 0 to 1000 Amps suitable to operate on 500 Volt AC , erected on existing panel board with all connection, wiring etc .with manufacturers calibration certificate.	1		Ea.	
78	Providing & erecting L.T. Current Transformer with bar primary 50/5 to 1000/5 ratio 15 VA burden erected in existing CRCA box duly secured with insulating materials connected to the meter	4		Ea.	
79	Supplying and erecting approved make set of indicator lamps of LED type lamp, lens cover, Bakelite holder complete erected with necessary connections.	11		Ea.	
80	Providing & erecting 415 V MCB Four Pole for Motor & Inductive Load (C Curve) having 10KA breaking capacity & confirms to IS :8828 in existing box having following capacity (a) 6 to 32 Amp. Cat III	12		Ea.	
81	Providing & erecting 415 V MCB Four Pole for Motor & Inductive Load (C Curve) having 10KA breaking capacity & confirms to IS :8828 in existing box having following capacity (b)40 Amp.Cat.III	2		Ea	
82	Providing & erecting 415 V MCB Four Pole for Motor & Inductive Load (C Curve) having 10KA breaking capacity & confirms to IS :8828 in existing box having following capacity (c)63 Amp.Cat.III	8		Ea	
83	Supplying & erecting approved make Digital time switch having lithium cell 6 years operative and operate battery backup 1 channel day clock with 14 memory programme, suitable to operate on 240V + 5%, 16A with, floating contacts Minimum switching setup time 1 minimum & LCD display. Also comprised permanent ON/OFF switching. Programming switches & housed in fire proof thermoplastic enclosure & transparent cover erected as required with necessary connection erected as directed.	2		Ea	
84	Supplying & erecting power contactor for time switch complete erected as per direction Cat III [D] 4 pole 440V 40 Amp.	2		Ea	
85	Supplying & erecting power contactor for time switch complete erected as per direction Cat III [B] 2 pole 250V 32 Amp.	2		Ea	
86	Approved make Iron Clad or metal clad four pole change over switch 415V confirming to IS of following capacity. (A) 200 A / 250 A Cat-III	1		Ea	

87	Supplying & erecting Digital / PCM / TDM EPABX System having SMT design, system with flexible universal slots, Inbuilt Auto attendant facility, Minimum 15 Nos. conference, Analog extension line, Calling GSM, E&M line, PRI / E1 & VOIP program me through Analog telephone digital key from Ethernet, public address cord, shall have unrestricted simultaneous dialling facility, QSIG protocol on PRI, 95 / STD / ISD / Local- Locking ,Class of Service, Quick Dial- Single Digit dialling of any two external numbers, Once only ring device, Boss/Secretary- Do not Disturb Facility, Power Down Mode, Hot Line, Hot Outward Dialling, Day Night Mode, Auto Call Back, Barge-in, Call Pick Up & Call Transfer, Call transfer while Ringing. With Voice Guide System, (DISA), Caller ID (CLI), CLI Base ECF,CLI Base routing Internet Ready Port, External Music Port, Call Budgeting, Call Most Calculation(ASMDR), DID Direct Inverse Dialling, External Music Input, Fax Homing, Global Directory Printing. with following capacities [B] No of Extension 24, No of Junctions 8, No of expandable ports:96, Operators Console - 01 Compatible: ISDN	2		Ea	
88	Providing and erecting ISI mark Medium class RIGID PVC PIPES of following size complete to be erected on/in wall or ceiling erected with necessary PVC fittings & Junction boxes fixed with adhesive solution & Clamps with following dia of pipes, in approved manner as directed (b) 25 mm	1000		Mtr	
89	Providing & erecting water cooler having storage capacity 150 Ltr. & cooling capacity 150 Ltr. per hour @ an ambient temp of 450 C. The outlet temp. of the water should drop by 150C within a hour, The water cooler should be comprising of hermetically sealed compressor, fan motor, condensing unit, water tank surrounded by evaporating, coil, thermostats, relay etc. complete with necessary inlet & outlet connection. The body of water cooler will be made from Stainless Steel.	2		Ea	
90	Providing and erecting approved make split air-conditioning unit consisting of condensing unit with fan motor, hermetically sealed rotary compressor with accessories etc. duly connected separately erected evaporating unit and blower motor with its accessories by means of proper insulated copper tubing up to 5 RMT suitable for (Cost includes M.S. Stand, Gas Charging & Internal Copper Wiring & Remote Control),__ For 5 star rating,__ (A) for 1.5 ton capacity	12		Ea	
91	Providing and erecting approved make split air-conditioning unit consisting of condensing unit with fan motor, hermetically sealed rotary compressor with accessories etc. duly connected separately erected evaporating unit and blower motor with its accessories by means of proper insulated copper tubing up to 5 RMT suitable for (Cost includes M.S. Stand, Gas Charging & Internal Copper Wiring & Remote Control),__ For 5 star rating, __(B) for 2 ton capacity	5		Ea	

92	Supplying & Installing M.S. powder coated standard type stand mounting for outdoor unit of Split A.C. up to 2TR Capacity, erected with necessary hardware materials as directed.	9		Ea	
93	Extra charges for the Items beyond standard length For Single phase Split A.C. Machine insulated pair of soft, copper tubing including power and control cable up to 2 TR capacity	210		Rn.Mtr	
94	Supplying & erecting Single line BEETEL / BPL / SONY/ Panasonic or equivalent make push button type Cord Less telephone instrument.	15		Ea.	
95	Supplying and erecting, commissioning and testing diesel generating set having continuous rating, 3 phase, 415 volts, 50 cycles A.C. supply comprising of a totally enclosed air/water cooled diesel engine with multi-cylinders developing suitable BHP not less than following capacity at 1500 RPM with 10% overload for one hour in 24 hours with standard accessories like fly wheel, lubricating oil cooler, "A" class governor, heavy duty fuel wheel and lubricating oil filter, oil bath air filler, lubricating oil pressure gauge, end exhaust manifold, standard set of tools with adjustable spanners, screw drivers, feeder gauge, cylinder head to cover, joint cylinder head to exhaust, element lube oil filter, 12/24 volts electric starting equipment complete with standard battery, dynamo, cut-outs, ammeter, necessary wiring, pressure gauge, starter etc and heavy duty Residential type exhaust silencer and vertical hot air duct both logged with asbestos rope, save oil trays, exhaust piping of required length, standard wall/floor mounted fuel with level indicator and piping and drip proof alternator, self excited, self regulated, screen protected, with excitation system, capable of delivering the rated system output at 415 volts, 3 phase, 0.8 PF, 50 Hz, 4 wire, running at 1500 RPM, conforming to IS-4722- 1968 with voltage regulation +/- 5% of rated voltage from no load to full load. Both the engine and alternator fitted on a common fabricated steel base plate with antivibration mounting engine and alternator both connected to each other by flexible flange coupling and with floor/wall mounted control panel box comprising of voltmeter ammeter, selector switches, ACB / MCCB / MCB of adequate capacity, Indicator lamps duly wired with HRC fuses. The alternator & control panel shall be connected with provided suitable capacity armored cable and complete with Acoustic enclosure (canopy) made out of 18 SWG CRCA Sheet, sound absorbing material Rockwool of 64 density & 100 mm thick conforming to IS: 8183 The resin bonded Rockwool covered from inside the canopy by perforated sheet with 3/4 mm holes, sound level not more than 75 dB at a distance of 1 mtr, as per PVCT norms. Erection, commissioning and satisfactory testing as per requirement with first filling of fuel, oil, etc. with guarantee of complete system for One year. & with obtaining all necessary certificate from Electrical Inspector. The Capacity and Ratings of DG sets are as below.				

95a	Continuous Rating of 50 KVA ,BHP not less than 65.8 BHP	1		Ea.	
96	<p>Providing & erecting approved make AMF control panel suitable for following size of 3 phase, 415 V., 50 cycles, A.C. diesel generating set complete of scope as detailed below:</p> <p>1) Power module: A pair of electromechanically interlocked contactors (for mains & generator) Overload relay for generator contactor Neutral contactor for mains and generator Power socket for connections.</p> <p>2) Control and metering module: Line voltage monitor. Generator voltage monitor Ammeter 3 items attempt start facility. Air circuit breakers/MCB/MCCB of suitable rating for auto/manual operation. Auto/manual switch. Emergency stop push buttons. Manual start push button. Frequency meter. Engine hour meter. Two earthing studs.</p> <p>3) Protection module: The engine shutdown in the unlikely event of Low lube oil pressure High cylinder head temperature. V belt failure.</p> <p>4) Indicators with alarm Load on generator.</p> <p>5) Indicators Load on mains Engine fails to start. Emergency stop battery charger.</p> <p>The AMF Panel of following capacity</p>				
96a	(A)AMF Control Panel for 50/62.5 KVA 3 phase DG Set	1		Ea.	
97	Supplying & erecting bank of all polypropylene condenser (APP type) with standard capacity of 2,3,5,7, 10,12.5 & 15 KVAR units of P.F. correction for operation on 3 phase 50 c/s, 400 /440V (+ / - 10%) with externally discharging resistance, earthing terminal & built on angle iron of channel iron frame work and provided with terminal cover box. Complete erected on provided iron bracket or on floor duly tested by license.	30		KVAR	
98	Supplying and erecting horizontal / vertical mounting type storage water heater with copper container housed in M.S./S.S. body insulated with glass wool / puff complete with heating elements, adjustable thermostats 300 c to 850 C, indicating lamp, safety valve, fusible plug, etc. Complete erected with coach bolts, nuts. washers & cementation Cat.II				
a	15 Ltr-.with 2 /3K.W. heating element	8		Ea.	

99	Supply of approved make GRP / FRP Pole having following specifications: GRP Light Pole made by CNC filament winding machine using thermoset resin polyester/epoxy resin system) having minimum 62% glass content. The pole should be in one piece and tapered round in shape, having smooth finish and should be totally free from corrosion as well as non conductive& shock proof Pole should be provided with FRP Anchor Base and it should be heavy duty, or MS Material duly painted with Epoxy paint. Pole should be flame retardant as per IS 6746. Resin used shall be UV resistance and pigmented. A highly weather resistant polyurethane coating shall be applied to the pole after applying suitable primer system that ensures proper adhesion of the paint. Minimum coating thickness shall be 80 to 100 micron. Deflection of the pole shall not exceed more than 10% of the length of pole for the given load"? Pole should be generally made as per the dimensional data, performance criteria and some inter changeability features of poles as per standard ANSI C 136.20 latest version or ASTM D 4923/01. The size of pole and type of installation are as below. (1) Suitable for base plate mounting single arm Bracket. C] Overall length of 3.5 Mtr. Average Thickness: 7mm. Top / Bottom OD Dia A/F 89/135 mm ± 2mm approx. Approx. Weight of Pole 15kg. approx. (Without Base) Anchor Base (Size 250 X 250 & 12 mmth.)	40		Ea.	
100	Providing Street light pole bracket consisting of" B" Class MS .pipe of 4.2 cms. outsidedia. complete with suitable MS sleeve tubing of required size and length suitable for 76.5mm/80mm/require size of pole top having nuts and bolts for fixing the brackets and having spread of 0.5 mtr. Length with 110 deg. with vertical plane and suitable welded stiffener reducer and nipple with checknut complete painted with one coat of Red oxide / PU base primer and two coats of Aluminium / PU paint. Paint with following nos of arms.	15		Ea.	
101	Providing M-20 / 1:2:4 cement concrete foundation & 70 % PCC from bottom including excavation for the pole of size 45 x 45 x 100 cms. Deep in below ground level with plinth of 45 cms x 45 cms (or 45 cmsdia x 45 cms) high upper ground level with necessary curing and finishing in approved manner. (for 4 & 6 mtr pole)	40		Ea.	

102	Supplying and erecting LED street light / Flood light fittings with High power White LEDs wattage of 1Watt and above assembled on single MCPCB, efficiency more than 130 lm/w and corrosion free High pressure die cast aluminum housing with smooth finish powder coated and heat sink extruded aluminium with diffuser and Polycarbonate optics/ lenses with company mark/name engraved or embossed 120 to 300 V, Power Factor more than 0.95, THD < 10 %, CCT 5000 K to 5700K, Uniformity ratio >0.45, Luminaire efficiency > 85 lumens/watt . LED driver efficiency > 85 %. CREE / OSRAM / PHILIPS Lumileds / NICHIA / SEOUL/ BridgeLux (U.S.A.) make LED used for luminaire. (Each fittings required LM-79 & LM-80 certificates)				
102a	Above 24 watts to 36 watts Cat-III	15		Ea.	
103	Post Top Lantern LED fitting comprises of Copper dust finish cast aluminum spigot and spun aluminum canopy fixed with opal polycarbonate, pipe arrangement for vertical mounting, open construction driver and accessories wired upto terminal block. (a) 40W Cat-III	25		Ea.	
104	Providing and erecting 24 Port NVR with necessary accessories as directed.	1		Ea	
105	Supplying & erecting approved make of 2 MP Bullet type IP55 Camera with specification of 2MP CMOS Image Sensor, H.264+ and H.264 Dual Video Stream Encoding, H.264+ provides bandwidth savings, Real Time 1080P Video Stream for Recording, 30 fps at 1080P (1920 x 1080), 3.6mm Fixed Lens for 83° angle of view, Up to 100ft of infrared night vision, Smart IR for intelligent IR intensity control, __ DWDR, IR Cut Filter (ICR), 3D Noise Reduction, Built in Web Server, __ IP67 Weather Proof for outdoor use, 12VDC or PoE power input.	10		Ea	
106	Supplying & erecting approved make of 2 MP Dome type IP55 Camera with specification of 2MP CMOS Image Sensor, H.264+ and H.264 Dual Video Stream Encoding, H.264+ provides bandwidth savings, Real Time 1080P Video Stream for Recording, 30 fps at 1080P (1920 x 1080), 3.6mm Fixed Lens for 83° angle of view, Up to 100ft of infrared night vision, Smart IR for intelligent IR intensity control, __ DWDR, IR Cut Filter (ICR), 3D Noise Reduction, Built in Web Server, __ IP67 Weather Proof for outdoor use, 12VDC or PoE power input.	5		Ea	
107	Supply and erecting approved make of 4 TB Hard Drive.	1		Ea	
108	Supply and erecting approved make POE Switch with required wires and accessories	2		Ea	
109	Supply and erecting approved make RACK 4U with required wires and accessories	1		Ea	
110	Dismantling the existing light, fan, bell, clock, independent plug point, wiring with mains of all types along with accessories etc. complete.	48		Point	

	Note:- Dismantled Materials to be retained by the Contractor				
111	Refilling the holes for dismantled point with cable with cement mortar & finishing in an approved manner.	20		Point	
112	Dismantling the existing cables of all types & sizes	150		Mtr	
113	Dismantling the existing underground cable without damaging it with glands, cable end box including refilling the trench up to ground level and making coils complete to be placed at different store.	75		Mtr	
114	Dismantling the existing switchgears, DB and Busbar of any size complete with / without board or angle iron frame.	9		Ea.	
115	Dismantling existing OCB, ACB complete from existing panel board in an approved manner. Note:- Dismantled switchgears breakers to be handed to the Section In charge.	1		Ea.	
116	Dismantling the existing ceiling fan / exhaust fan / cabin fan / bracket fan complete with accessories, G.I. down rod, frame etc. and making the site clear.	25		Ea.	
117	Dismantling the existing pole up to 6 m height with brackets, clamps, insulators, stay from the cement concrete foundation and making the site clear by refilling the pits with excavated materials and brining it to the ground level.	10		Ea.	
118	Dismantling the existing any type of indoor light fittings	25		Ea.	
119	Dismantling the existing any type of street light fittings on pole up to 60 mtr height with bracket and making the site as original complete.	10		Ea.	
120	Dismantling the existing any type of fittings above 6 mtr height pole from pole with bracket complete.	10		Ea.	
121	Dismantling the existing electric geyser or storage type water heater of any size along with plumbing connection and making the site clear.	8		Ea.	
122	Dismantling the existing Distribution Transformer / D.G. Set of any capacity from the plinth / foundation safely without any damages and storing it in safe place.	1		KVA	
123	Dismantling existing pole mounted Distribution Transformer safely without any damages and storing it in safe place.	1		KVA	
124	Dismantling the existing window type air conditioner of any type and capacity safely without any damages and making the site clear.	6		Ea.	
125	Dismantling the existing split type air conditioner of any type and capacity safely without any damages and making the site clear.	2		Ea.	
126	UP LIGHTER LIGHT die-cast aluminium, IP-65, 90v-260vac, tempera ed glass diffuser.	50		Ea.	
127	Providing and erecting XLPE (IS:7098) (I)-88 ISI armoured cable multistrand Copper conductor for 1.1 KV. to be laid on wall with necessary clamps or in existing trench / pipe at road crossing or floor of following size of cable.				
127a	3 core 2.5Sq. mm	400		Ea.	

128	Supplying & erecting XLPE(IS:7098)(I)-88 ISI unarmoured copper cable 1.1 KV grade to be erected as directed of following size.				
128a	3 core 2.5 Sq. mm	200		Ea.	
129	Supplying & erecting approved make Digital time switch having lithium cell 6 years operative and operate battery backup 1 channel day clock with 14 memory programme, suitable to operate on 240V + 5%, 16A with, floating contacts Minimum switching setup time 1 minimum & LCD display. Also comprised permanent ON/OFF switching. Programming switches & housed in fire proof thermoplastic enclosure & transparent cover erected as required with necessary connection erected as directed.	8		Ea.	
130	Supplying & erecting power contactor for time switch complete erected as per direction Cat III [D] 4 pole 440V 40 Amp.	8		Ea.	
131	Providing Street light pole bracket consisting of" B" Class MS .pipe of 4.2 cms. outsidedia.complete with suitable MS sleeve tubing of required size and length suitable for 76.5mm/80mm/require size of pole top having nuts and bolts for fixing the brackets and having spread of 0.5 mtr. Length with 110 deg.with vertical plane and suitable welded stiffener reducer and nipple with checknut complete painted with one coat.of Red oxide / PU base primer and two coats of Aluminium / PU paint. paint with following nos of arms.[A] Single Arm bracket 0.5 Mtr	15		Ea.	
132	Providing & erecting approved make CFL outdoors type Bollard comprising serrated diffuser mounted on aluminium cast control gear housing with two no of 26 watt CFL Lamps holder & accessories mounted on 60 cms high rotomoulded LLDPE pillar duly grouted on a concrete base by means of four nos of M8 X 75 mm studs with necessary base ring. [Cat.III]	35		Ea.	
				Total	

PART - D Site Development work					
It.	Description	Qty.	Rate	Unit	Amount
1	Demolishing brick work manually/ by mechanical means including stacking of serviceable material and disposal of unserviceable material within 50 metres lead as per direction of Engineer-in-charge.	10.40		m3	
2	Demolishing stone rubble masonry manually/ by mechanical means including stacking of serviceable material and disposal of unserviceable material within 50 metres lead as per direction of Engineer-in-charge	22.73		m3	

3	Earth work in excavation by mechanical means (Hydraulic excavator) /manual means in foundation trenches or drains (not exceeding 1.5 m in width or 10 sqm on plan), including dressing of sides and ramming of bottoms, lift upto 1.5 m, including getting out the excavated soil and disposal of surplus excavated soil as directed, within a lead of 50 m.	51.57		m3	
4	Providing and laying in position cement concrete of specified grade excluding the cost of centering and shuttering - All work up to plinth level :1:4:8 (1 Cement : 4 coarse sand : 8 graded stone aggregate 40 mm nominal size)	26.29		m3	
5	Brick work with common burnt clay F.P.S. (non modular) bricks of class designation 7.5 in foundation and plinth in:Cement mortar 1:4 (1 cement : 4 coarse sand)	20.78		m3	
6	Half brick masonry with common burnt clay F.P.S. (non modular) bricks of class designation 7.5 in foundations and plinth in:Cement mortar 1:3 (1 cement : 3 coarse sand)	30.47		m2	
7	Brick work with common burnt clay F.P.S. (non modular) bricks of class designation 7.5 in superstructure above plinth level up to floor V level in all shapes and sizes in :Cement mortar 1:6 (1 cement : 6 coarse sand)	15.06		m3	
8	Half brick masonry with common burnt clay F.P.S. (non modular) bricks of class designation 7.5 in superstructure above plinth level up to floor V level.Cement mortar 1:4 (1 cement :4 coarse sand)	36.57		m2	
9	15 mm cement plaster on the rough side of single or half brick wall of mix :1:4 (1 cement: 4 fine sand)	266.73		m2	
10	Providing and laying cheched tiles in required sizes (thickness to be specified by the manufacturer) with required color combination and shape conforming to IS: 15622, of approved make, in all colours and shades,laid on 20mm thick cement mortar 1:6 (1 cement : 6 coarse sand),jointing with grey cement slurry @ 3.3kg/sqm including grouting the joints with white cement and matching pigments etc., complete.	280.86		m2	
11	Grouting the joints of flooring tiles having joints of 3 mm width, using epoxy grout mix of 0.70 kg of organic coated filler of desired shade (0.10 kg of hardener and 0.20 kg of resin per kg), including filling /grouting and finishing complete as per direction of Engineer-in-charge.	280.86		m2	
12	Finishing walls with Premium Acrylic Smooth exterior paint with Silicone additives of required shade:New work (Two or more coats applied @ 1.43 ltr/10 sqm over and including priming coat of exterior primer applied @ 2.20 kg/10 sqm)	266.73		m2	

13	Providing and laying 60mm thick factory made cement concrete interlocking paver block of M - 30 grade made by block making machine with strong vibratory compaction, of approved size, design & shape, laid in required colour and pattern over and including 50mm thick compacted bed of coarse sand, filling the joints with line sand etc. all complete as per the direction of Engineer-in-charge.	295.94		m2	
14	Providing, laying and making kerb channel 30 cm wide and 50 mm thick with cement concrete 1:3:6 (1 cement: 3coarse sand: 6 graded stone aggregate 20 mm nominal size) over 75mm bed of dry brick ballast 40 mm nominal size, well rammed and consolidated and grouted with fine sand, including finishing the top smooth etc. complete and as per direction of Engineer-in-charge.	104.24		m2	
15	Providing and fixing 18 mm thick gang saw cut, mirror polished, premoulded and prepolished, machine cut for kitchen platforms, vanity counters, window sills, facias, drops and similar locations of required size, approved shade, colour and texture laid over 20 mm thick base cement mortar 1:4 (1 cement : 4 coarse sand), joints treated with white cement, mixed with matching pigment, epoxy touch ups, including rubbing, curing, moulding and polishing to edges to give high gloss finish etc. complete at all levels.(a) Granite of any colour and shade - area of slab over 0.50 sqm	56.77		m2	
16	Anti- termite treatment in lawn area with three booster doses as directed by Engineer-in-charge/consultant.	1108.00		m2	
17	Providing Farm Yard Manure of approved quality including labour for spreading, mixing soil and manure and leveling after spreading and mixing evenly as directed by Engineer-in-Charge. (75mm thick layer of FYM)	1108.00		m2	
18	Soil filling, grading, rolling, compaction, etc complete up to 1.5m depth including loading, unloading, supply of good quality soil as specified if required	88.64		m3	
19	Providing & planting Bermuda doob lawn the same at a distance 5cm x 5cm typing in area as per drawing	1689.50		m2	
	Total Part – D Site Development work				

PART - E FURNITURE ITEM					
It.	Description	Qty.	Rate	Unit	Amount
1.00	Double Bed :- Manufacturing, supplying and fixing in position Double bed of size of 2083 mm (L) X 1930 mm (W) X 900 mm (H), with valsadi teak wood finished in monocoat polished and sub structure of 40x20 mm M.S. section with matt green powder coating. BWP board of approved make as Green, century or Duro complete as per the specifications and drawing.	5.00		No.	
2.00	Single Bed :- Manufacturing, supplying and fixing in position single bed of size of 2083 mm (L) X 1200 mm (W) X 900 mm (H), with valsadi teak wood finished in monocoat polished and sub structure of 40x20 mm M.S. section with matt green powder coating. BWP board of approved make as Green, century or Duro complete as per the specifications and drawing.	6.00		No.	
3.00	Side Table 18" X 18" :- Manufacturing, supplying and fixing in position side Table of size of 450 mm (L) X 450 mm (W) X 450 mm (H), with valsadi teak wood finished in monocoat polished. BWP board of approved make as Green, century or Duro complete as per the specifications and drawing.	22		No.	
4.00	Center Table :- Manufacturing, supplying and fixing in position Centre Table of size of 750 mm (L) X 450 mm (W) X 450 mm (H), with valsadi teak wood finished in monocoat polished. BWP board of approved make as Green, century or Duro complete as per the specifications and drawing.	12		No.	
5.00	Wardrobe - Providing & Fixing Storewel - 2296mm (W) x 984 mm (D) x 1980 mm (H) Excluding Leveler Construction & Material Welded construction, 0.7mm thk (+/- 0.07 mm) CRCA* for shelf , 0.8mm thk (+/- 0.08 mm) High Yield strength CRCA** for doors and back,, 0.9mm thk (+/- 0.08 mm) CRCA* for all other components, * CRCA 'D' grade as per IS:513, **CRCA 'D' grade high yield strength as per IS:513. Locking and Handle Mazak Handle and Three way locking mechanism with shooting bolt. Shelving Height wise adjustable shelf mounting, Uniformly Distributed Load Capacity per each shelf is 40 Kg maximum, 4 Nos. of adjustable full shelf and Box File A4 Size (85Wx345Hx285D) can be stored vertically on three shelves and the clear space above fourth shelf is 240mm. Finish Epoxy Powder coated to the thickness of 50 microns (+/-10).	14		No.	

.00	Sofa 3 seater + 2 seater manufacturing, supplying and fixing in position Sofa (Two and half seat) of size of 1400 mm (L) X 730 mm (W) X 760 mm (H), with removable fabric covers, with valsadi teak wood finished in monocoat polished. And sub structure of 40x20 mm M.S. section, Back support is 8mm M.S. Rod with matt green powder coating. BWP board of approved make as Green, century or Duro complete as per the specifications and drawing. Manufacturing, supplying and fixing in position Sofa (Three seat) of size of 1650 mm (L) X 730 mm (W) X 760 mm (H), with removable fabric covers, with valsadi teak wood finished in monocoat polished. And sub structure of 40x20 mm M.S. section, Back support is 8mm M.S. Rod with matt green powder coating. BWP board of approved make as Green, century or Duro complete as per the specifications and drawing.	5.00		No.	
7.00	TV Set (40" size)with TV wall cover with furniture :- Manufacturing, supplying and fixing in position TV Console of size of 1600 mm (L) X 300 mm (W) X 1200 mm (H), with valsadi teak wood finished in monocoat polished. BWP board of approved make as Green, century or Duro complete as per the specifications and drawing.	15.00		No.	
8.00	Dinner Table- 6 seater :- Manufacturing, supplying and fixing in position Dining Table of size of 1800 mm (L) X 1200 mm (W) X 760 mm (H), with valsadi teak wood finished in monocoat polished and sub structure of 40x20 mm M.S. section with matt green powder coating. Top would be 50mm wide 6 mm thick Ash wood patta with monocoat polished. BWP board of approved make as Green, century or Duro complete as per the specifications and drawing.	4.00		No.	
9.00	Reception Table:- Providing & Fixing Reception Table as per lay out and as per instruction by site in-charge.	1.00		No.	
10	Kitchen Counter	1.00		No.	
11	Kitchen wardrobe	2.00		No.	
12	Leather Single Sofa :- Manufacturing, supplying and fixing in position Sofa (single seat) of size of 650 mm (L) X 730 mm (W) X 760 mm (H), with removable fabric covers, valsadi teak wood finished in monocoat polished and sub structure of 40x20 mm M.S. section, Back support is 8mm M.S. Rod with matt green powder coating. BWP board of approved make as Green, century or Duro complete as per the specifications and drawing.	4.00		No.	
13	Leather Single Sofa (in Hall & Reception) :- Manufacturing, supplying and fixing in position Sofa (single seat) of size of 14.00 m (L) X 730 mm (W) X 760 mm (H), with removable fabric covers, valsadi teak wood finished in monocoat polished and sub structure of 40x20 mm M.S. section, Back support is 8mm M.S. Rod with matt green powder coating. BWP board of approved make as Green, century or Duro complete as per the specifications and drawing.	14.00		mtr.	
14	Center Table with Glass top :- Manufacturing, supplying and fixing in position Centre Table of size of 1200 mm	4.00		No.	

	(dia.) X 450/700 mm (H), with support leg make from valsadi teak wood finished in monocoat polished. complete as per the specifications and drawing etc as directed by Engineer in charge.				
15	Cupboard below Kitchen Platform - Providing & Fixing Cupboard Shelf/drawer of S.S.304 with frame, shutter make from BWP board of approved make as Green, century or Duro & 1.00 mm thick sunmica sheet of Royal complete as per the specifications and drawing including all cost of fixtures, materials and labour etc as directed by Engineer in charge.	9.21		mtr.	
16	Providing and fixing curtain with necessary fitting like stainless steel rod(SS304 heavy) & bracket, clamps etc. curtains are designed using high quality fabric that allows optimum amount of light to enter the room. Curtains are used for maintaining privacy and also for decorating the interiors. Curtains in a plethora of colors and design.	80		Sq.m tr	
Total of Part – E FURNITURE ITEM					

PART - F CREDIT ITEM					
It.	Description	Qty.	Rate	Unit	Amount
1	Taking out dismantled following materials from jetty area including loading, transportation, unloading, taxes and taken away by the contractor as it is where it is basis and as directed by engineer in charge.				
a	D1 - (0.75 x 2.10) Flush Door shutter with frame & fixtures	17		each	
b	D2 - (1.00 x 2.10) Flush Door shutter with frame & fixtures	13		each	
c	D3 - (1.50 x 2.10) Flush Door shutter with frame & fixtures	1		each	
d	Window - W2 T.Wood shutter with frame - (1.50 x 1.30)	22		each	
e	GI Pipe - 15mm dia.	56		metre	
f	GI Pipe - 25mm dia.	116		metre	
g	GI Pipe - 50mm dia.	18		metre	
h	PVC Pipe - 75mm dia.	68		metre	
i	PVC Pipe - 110mm dia.	58		metre	
j	Aluminium windows , Ventilator	646.40		Kg	
k	S.S.staircase railing (L= 9.20 m)	22.86		Kg	
l	Polythelene water storage tank	2500		lit.	
m	MS grill && Collapsible gate	363.34		Kg	
N	Ceiling Fan	25		each	
O	Lan Cable	150		Rmt	
P	LED Light	25		each	
Q	MCB	9		each	
R	Distribution Board	1		each	
S	Armoured cable	45		each	
t	Window AC	4		each	
u	Split AC	6		each	

v	Water Cooler	1		each	
w	TV	8		each	
	Total of Part – F CREDIT ITEM				

Summary

Part – A Civil work Rs. _____

Part – B Plumbing work Rs. _____

Part – C Electrical work Rs. _____

Part – D Site development work Rs. _____

Part – E Furniture work Rs. _____

Total amount (A+B+C+D+E) Rs. _____

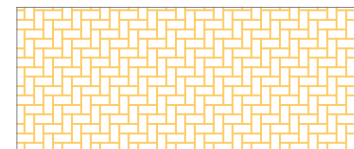
Less Part – F Credit item Rs. _____

Net Total amount Rs. _____

Total Rs in words.....

Note: The rates and amounts quoted by the party shall be gross rates and amounts and must include all payments on account of taxes, levies, duties, royalties etc, (excluding GST) payable to the State of Gujarat or Government of India or any other authority or Body Corporate and all other incidental charges that the party may have to bear for the execution of the works.

Signature with Seal



www.jayambedesigners.com



- NOTES:-
- 1 ALL UNFINISHED DIMENSIONS ARE TO BE READ AND NOT TO BE MEASURED.
 - 2 ALL DIMENSIONS ARE IN MT OR MM.
 - 3 ALL LEVELS CONSIDER TO BE FINISHED.
 - 4 ANY AMBIGUITY FOUND SHALL BE IMMEDIATELY BROUGHT TO THE NOTICE OF THE ARCHITECTS BEFORE COMMENCEMENT OF THE WORK.
 - 5 FOR R.C.C.COLUMNS & BEAMS REFER TO STRUCTURAL DRAWINGS.
 - 6 ANY ALTERATION IN DIMENSION DUE TO SITE CONDITION SHOULD BE IMMEDIATELY BROUGHT TO ARCHITECT'S NOTICE.
 - 7 ALL OUTER WALL : 0.23 MT (230 MM)&INTERNAL WALL : 0.115 MT (115 MM)

TENDER DRAWINGS

ISSUE RECORD	
GOOD FOR CONSTRUCTION	
TENDER DRAWINGS	
DESIGN DEVELOPMENT	
ISSUED FOR APPROVAL	

PRINTS ISSUED					
DATE	CLIENT	SITE		TOTAL	REMARK

REVISION :				
REV NO.	DATE	PARTICULARS		CKD.

CLIENT :
DEENDAYAL PORT TRUST

PROJECT :
CONSULTANT FOR THE WORK OF RENOVATION AND EXTENSION OF GUEST HOUSE AT PORT COLONY AND RENOVATION OF ADMINISTRATIVE BUILDING AT JETTY,OOT, VADINAR.

BUILDING :- GUEST HOUSE


PROJECT NO: 441

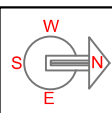
DESCRIPTION:

FRONT 3D VIEW		
CHK.BY	-- PMU	SCALE: N.T.S.
DEALT	-- MANOJ	DRAWING NO.

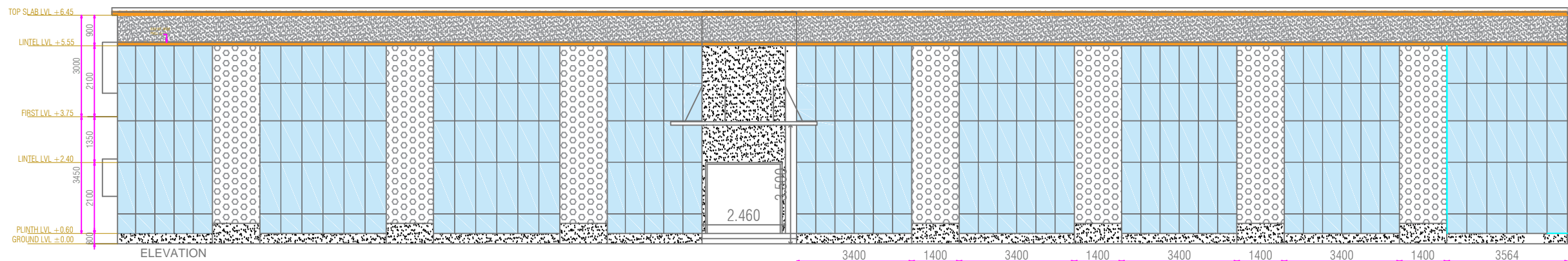
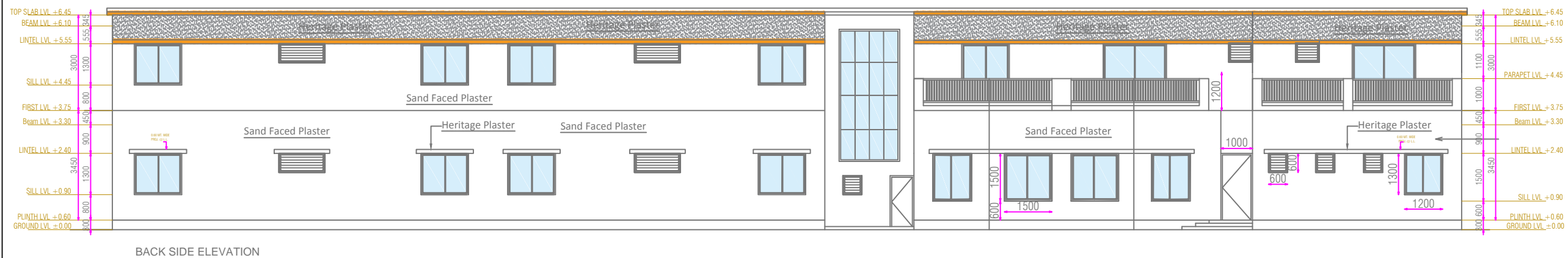
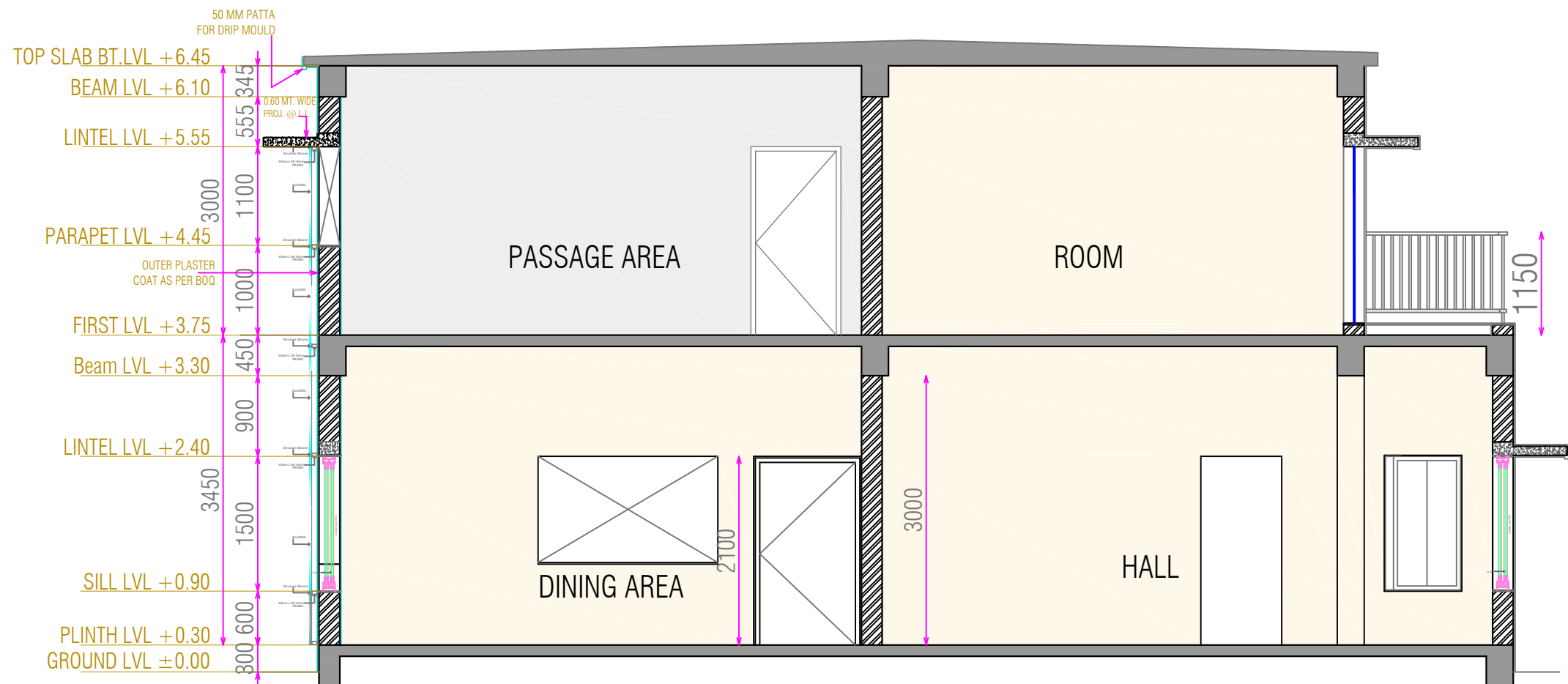
DPT_GH_AP_ARC_5.1

ARCHITECT:





JAG DESIGNERS PVT. LTD.
(JAY AMBE GROUP)
ARCHITECTS-URBAN PLANNER-ENGINEERS-REG.VALUERS-PMC
41/2 2nd Floor, Sangathan Society ,Opp. Sur rise Park Society
Drive in road Ahmedabad - 380052.
Mo. No.: +91 -9099902227
Email: info@jayambedesigners.com,
www.jayambedesigners.com



NOTES:-

- 1 ALL UNFINISHED DIMENSIONS ARE TO BE READ AND NOT TO BE MEASURED.
- 2 ALL DIMENSIONS ARE IN MT OR MM.
- 3 ALL LEVELS CONSIDER TO BE FINISHED.
- 4 ANY AMBIGUITY FOUND SHALL BE IMMEDIATELY BROUGHT TO THE NOTICE OF THE ARCHITECTS BEFORE COMMENCEMENT OF THE WORK.
- 5 FOR R.C.C.COLUMN & BEAMS REFER TO STRUCTURAL DRAWINGS.
- 6 ANY ALTERATION IN DIMENSION DUE TO SITE CONDITION SHOULD BE IMMEDIATELY BROUGHT TO ARCHITECT'S NOTICE.
- 7 ALL OUTER WALL : 0.23 MT (230 MM)&INTERNAL WALL : 0.115 MT (115 MM)

TENDER DRAWINGS

ISSUE RECORD	
GOOD FOR CONSTRUCTION	
TENDER DRAWINGS	
DESIGN DEVELOPMENT	
ISSUED FOR APPROVAL	

PRINTS ISSUED					
DATE	CLIENT	SITE		TOTAL	REMARK

REVISION:			
REV NO.	DATE	PARTICULARS	CKD.

CLIENT :

DEENDAYAL PORT TRUST

PROJECT :

CONSULTANT FOR THE WORK OF
RENOVATION AND EXTENSION OF
GUEST HOUSE AT PORT COLONY AND
RENOVATION OF ADMINISTRATIVE
BUILDING AT JETTY, OOT, VADINAR.

BUILDING :- GUEST HOUSE

PROJECT NO: 441

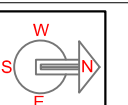
DESCRIPTION:

ELEVATION & SECTION

CHK.BY	— PMU	SCALE: N.T.S.
DEALT	— MANOJ	DRAWING NO.

DPT GH AP ARC 3.1

ARCHITECT:



JAG DESIGNERS PVT. LTD.

(JAY AMBE GROUP)

ARCHITECTS-URBAN PLANNER-ENGINEERS-REG. VALUERS-PMC

41/2, 2nd Floor, Sangathan Society, Opp. Sunrise Park Society

Drive in road Ahmedabad - 380052.

Mo. No.: +91-9099902227

MO. NO.: +91-9099902227
Email: info@jayambedesigners.com,
www.jayambedesigners.com

NOTES:-

- 1 ALL UNFINISHED DIMENSIONS ARE TO BE READ AND NOT TO BE MEASURED.
- 2 ALL DIMENSIONS ARE IN MT OR MM.
- 3 ALL LEVELS CONSIDER TO BE FINISHED.
- 4 ANY AMBIGUITY FOUND SHALL BE IMMEDIATELY BROUGHT TO THE NOTICE OF THE ARCHITECTS BEFORE COMMENCEMENT OF THE WORK.
- 5 FOR R.C.C.COLUMNS & BEAMS REFER TO STRUCTURAL DRAWINGS.
- 6 ANY ALTERATION IN DIMENSION DUE TO SITE CONDITION SHOULD BE IMMEDIATELY BROUGHT TO ARCHITECT'S NOTICE.
- 7 ALL OUTER WALL : 0.23 MT (230 MM)&INTERNAL WALL : 0.115 MT (115 MM)

	ONB SWITCH BOARD
	SWITCH BOARD
	1A POWER POINT
	0/15A POWER POINT
	COMPUTER POINT
	PHONE JACKING POINT
	TELEPHONE POINT
	DATA POINT
	TV POINT
	BRACKET LIGHT
	1A POWER POINT FOR OUTDOOR
	DISTRIBUTION BOARD
	EXHAUST FAN
	MIRROR LIGHT
	CCTV CAMERA POINT
	CCTV DOME TYPE
	TS
	SAW SURFACE
	PAW RECESS
	DOWN LIGHT
	CEILING FAN 3000

TENDER DRAWINGS

ISSUE RECORD	
GOOD FOR CONSTRUCTION	
TENDER DRAWINGS	✓
DESIGN DEVELOPMENT	
ISSUED FOR APPROVAL	

PRINTS ISSUED					
DATE	CLIENT	SITE		TOTAL	REMARK
25-11-2020				03	A3

REVISION :

REV NO.	DATE	PARTICULARS	CKD.

CLIENT :

DEENDAYAL PORT TRUST

PROJECT :

CONSULTANT FOR THE WORK OF RENOVATION AND EXTENSION OF GUEST HOUSE AT PORT COLONY AND RENOVATION OF ADMINISTRATIVE BUILDING AT JETTY,OOT, VADINAR.

BUILDING :- GUEST HOUSE

PROJECT NO: 441

DESCRIPTION: GROUND FLOOR LAYOUT

CHK.BY	— PMU	SCALE: N.T.S.
DEALT	—	DRAWING NO. EL_TD_01
FILE NAME	—	
ARCHITECT: 		

JAG DESIGNERS PVT. LTD.

(JAY AMBE GROUP)

ARCHITECTS-URBAN PLANNER-ENGINEERS-REG.VALUERS-PMC

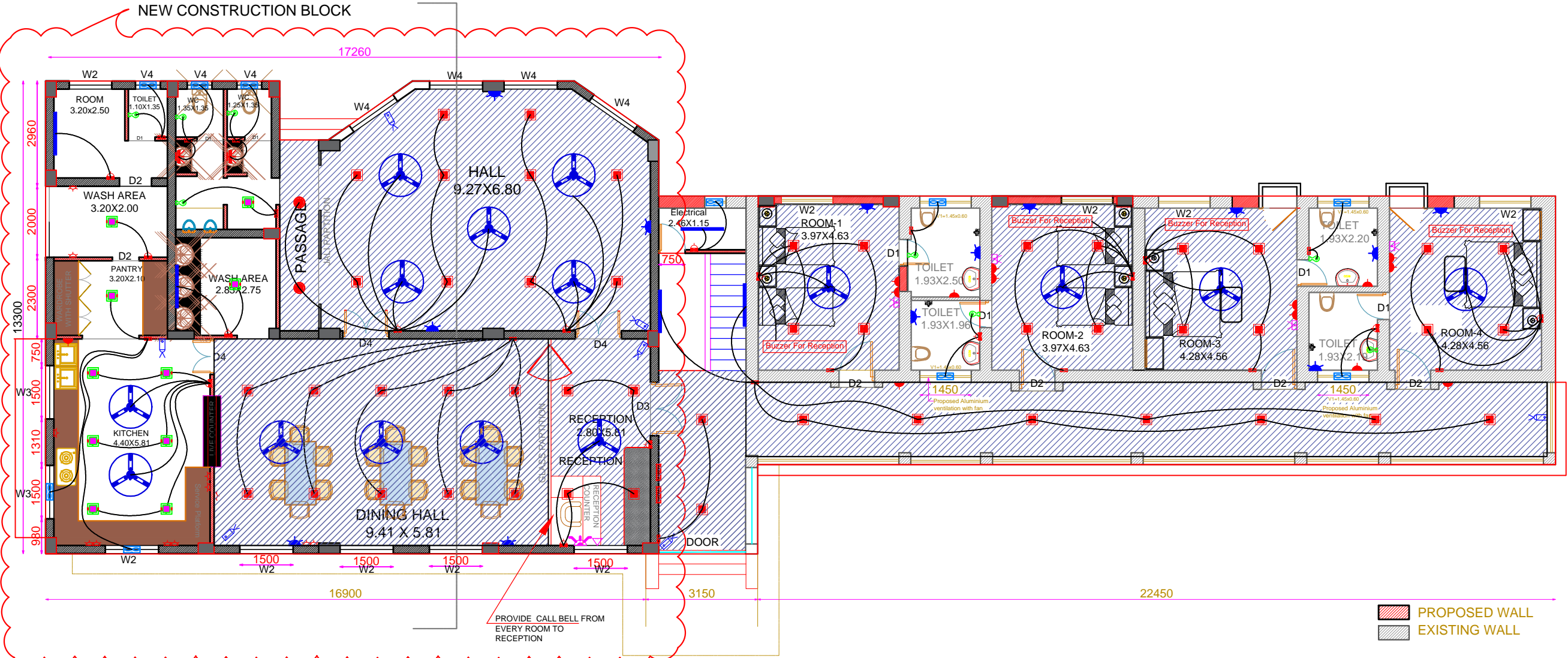
41/2 2nd Floor, Sangathan Society ,Opp. Sur rise Park Society Drive in road Ahmedabad - 380052.

Mo. No.: +91-9099902227

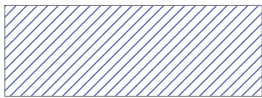
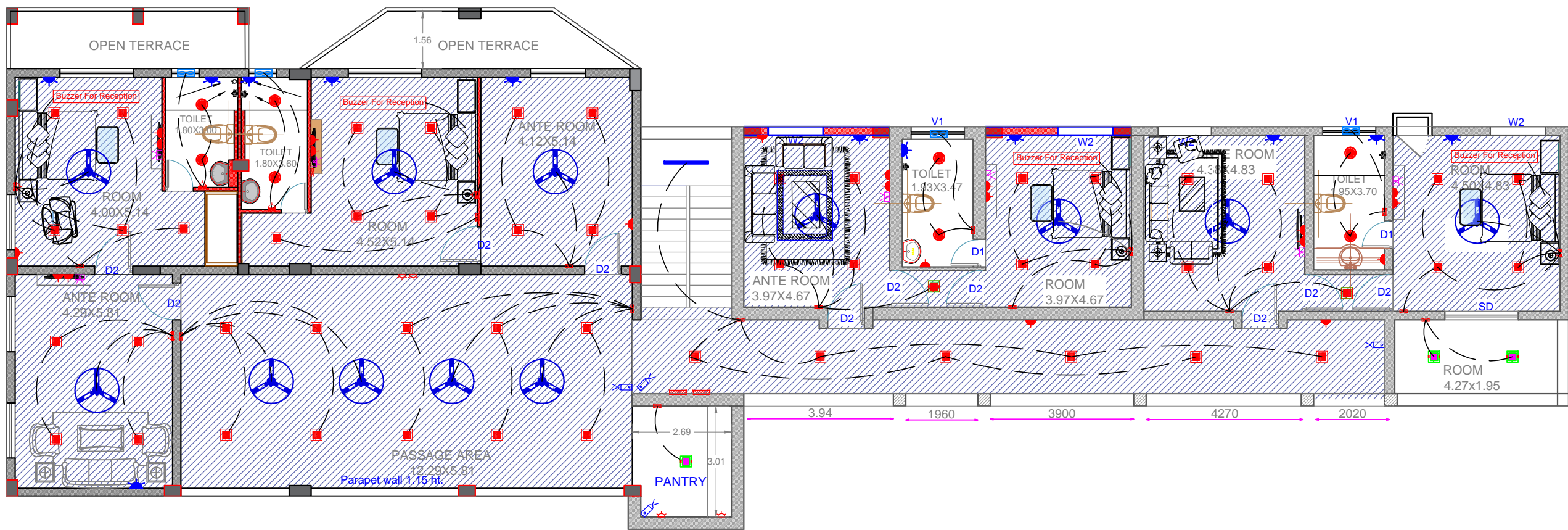
Email: info@jayambedesigners.com,

www.jayambedesigners.com

NEW CONSTRUCTION BLOCK



CEILING AREA



CEILING AREA

NOTES:-

- 1 ALL UNFINISHED DIMENSIONS ARE TO BE READ AND NOT TO BE MEASURED.
- 2 ALL DIMENSIONS ARE IN MT OR MM.
- 3 ALL LEVELS CONSIDER TO BE FINISHED.
- 4 ANY AMBIGUITY FOUND SHALL BE IMMEDIATELY BROUGHT TO THE NOTICE OF THE ARCHITECTS BEFORE COMMENCEMENT OF THE WORK.
- 5 FOR R.C.C.COLUMNS & BEAMS REFER TO STRUCTURAL DRAWINGS.
- 6 ANY ALTERATION IN DIMENSION DUE TO SITE CONDITION SHOULD BE IMMEDIATELY BROUGHT TO ARCHITECT'S NOTICE.
- 7 ALL OUTER WALL : 0.23 MT (230 MM)&INTERNAL WALL : 0.115 MT (115 MM)

	ONB SWITCH BOARD
	SWITCH BOARD
	1A POWER POINT
	5/15A POWER POINT
	COMPUTER POINT
	PHONE / TELEPHONE POINT / CBL JUNCTION
	TELEPHONE POINT
	DATA POINT
	TV POINT
	BRACKET LIGHT
	1A POWER POINT FOR LIGHTING
	DISTRIBUTION BOARD
	EXHAUST FAN
	MIRROR LIGHT
	CCTV CAMERA POINT
	CCTV DOME TYPE
	TV
	SAW SURFACE
	PAW RECESS
	DOWN LIGHT
	CEILING FAN 3000

TENDER DRAWINGS

ISSUE RECORD	
GOOD FOR CONSTRUCTION	
TENDER DRAWINGS	
DESIGN DEVELOPMENT	
ISSUED FOR APPROVAL	

PRINTS ISSUED					
DATE	CLIENT	SITE		TOTAL	REMARK
25-11-2020				03	A3

REVISION :

REV NO.	DATE	PARTICULARS	CKD.

CLIENT :

DEENDAYAL PORT TRUST

PROJECT :

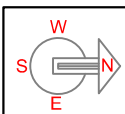
CONSULTANT FOR THE WORK OF RENOVATION AND EXTENSION OF GUEST HOUSE AT PORT COLONY AND RENOVATION OF ADMINISTRATIVE BUILDING AT JETTY,OOT, VADINAR.

BUILDING :- GUEST HOUSE

PROJECT NO: 441

DESCRIPTION: FIRST FLOOR LAYOUT

CHK.BY	— PMU	SCALE: N.T.S.
DEALT	—	DRAWING NO.
FILE NAME	—	EL_TD_02



JAG DESIGNERS PVT. LTD.

(JAY AMBE GROUP)

ARCHITECTS-URBAN PLANNER-ENGINEERS-REG.VALUERS-PMC

41/2 2nd Floor, Sangathan Society ,Opp. Sur rise Park Society Drive in road Ahmedabad - 380052.

Mo. No.: +91-9099902227

Email: info@jayambedesigners.com,

www.jayambedesigners.com